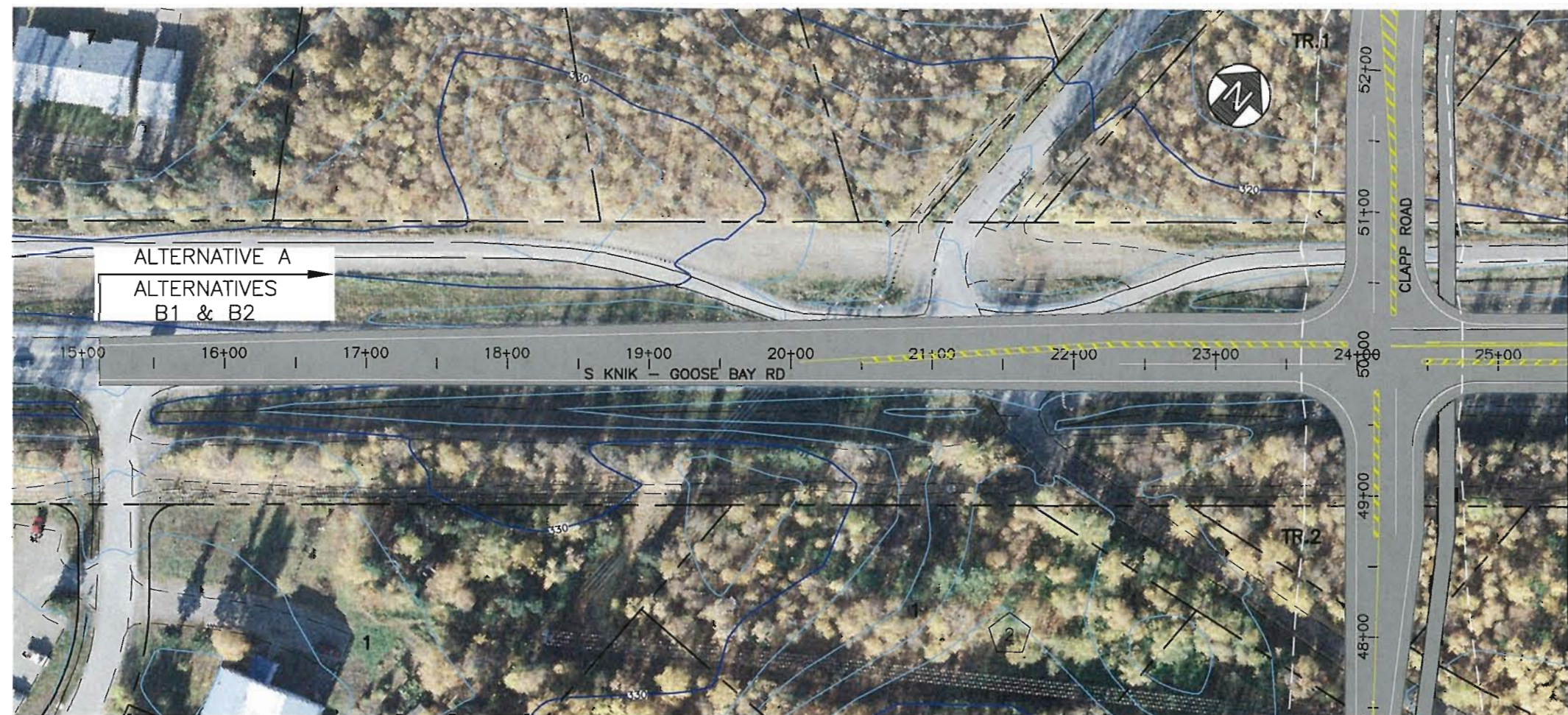
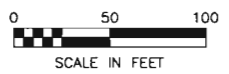


H:\Jobs\09-008 Wasilla Mack Drive Extension (COW)\04-Preliminary Engineering Report\CAD\Drawings\09006_04_ALT-KGB-F01-F02_1=100_12/22/09 at 17:29 by cob
 T: CAB
 DESIGNED BY: DWL
 CHECKED BY: DWL
 DRAFTED BY: TLC
 SCALE: 1" = 40' (Horizontal)
 SCALE: 1" = 20' (Vertical)
 PLOT SCALE: 1" = 40' (Horizontal)
 PLOT SCALE: 1" = 20' (Vertical)
 PLOT VIEW:



KNIK GOOSE BAY ROAD
 WORK INCLUDES:
 EMBANKMENT WIDENING,
 PAVING AND STRIPING
 AS NECESSARY TO
 CONSTRUCT TURN
 POCKETS.



KNIK GOOSE BAY



SHEET NO.	TOTAL SHEETS	
F46	F47	
STATE	YEAR	
ALASKA	2009-2010	
PROJECT DESIGNATION		
ADDENDUM NO.		
ATTACHMENT NO.		
REVISIONS		
NO.	DATE	DESCRIPTION



PRELIMINARY ENGINEERING
NOT FOR CONSTRUCTION

WORK IN PROGRESS
 This document represents
 current concepts as of _____
 (See date @ left border)

HATTENBURG DILLEY & LINNELL
 CITY OF WASILLA
 DEPARTMENT OF PUBLIC WORKS
 WASILLA, ALASKA

S. MACK DRIVE EXTENSION
 PRELIMINARY ENGINEERING
 REPORT

LANE WIDENING PLAN
 "KGB" BOP TO "KGB" 36+50

H:\jobs\09-006 Wasilla Mack Drive Extension (COW)\04-Preliminary Engineering Report\CAD\Drawings\09006_04_A11-KGB-F01-F02_1=100_12/22/09.dwg
 LAYOUT: F01-F10
 VIEW: F02, A1, L5000, F03, H, X7700
 XREF: 09006_00_B002, 09006_04_BASEMAP, 09006_04_IMAGE, 09006_04_KGBPLOT09006_04_XREFIN
 SCALE: 1"=100'
 PLOT SCALE: 1"=100'
 XREFS:
 H:\jobs\09-006 Wasilla Mack Drive Extension (COW)\04-Preliminary Engineering Report\CAD\Drawings\09006_04_A11-KGB-F01-F02_1=100_12/22/09.dwg
 PLOT CIB: 09006_04_KGBPLOT09006_04_XREFIN
 DESIGNED BY: T.CAB
 CHECKED BY: DWL
 DRAFTED BY: JLC



KNIK GOOSE BAY ROAD
 WORK INCLUDES:
 EMBANKMENT WIDENING,
 PAVING AND STRIPING
 AS NECESSARY TO
 CONSTRUCT TURN
 POCKETS.

SHEET NO.	TOTAL SHEETS	
F47	F47	
STATE	YEAR	
ALASKA	2009-2010	
PROJECT DESIGNATION		
ADDENDUM NO.		
ATTACHMENT NO.		
REVISIONS		
NO.	DATE	DESCRIPTION

MATCH LINE "KGB" 48+50

KNIK GOOSE BAY



MATCH LINE "KGB" 48+50

MATCH LINE "KGB" 60+50

PRELIMINARY ENGINEERING
NOT FOR CONSTRUCTION

WORK IN PROGRESS
 This document represents
 current concepts as of
 (See date @ left border)

HATTENBURG DILLEY & LINNELL

CITY OF WASILLA
 DEPARTMENT OF PUBLIC WORKS
 WASILLA, ALASKA

S. MACK DRIVE EXTENSION
 PRELIMINARY ENGINEERING
 REPORT

LANE WIDENING PLAN
 "KGB" 36+50 TO "KGB" 62+50