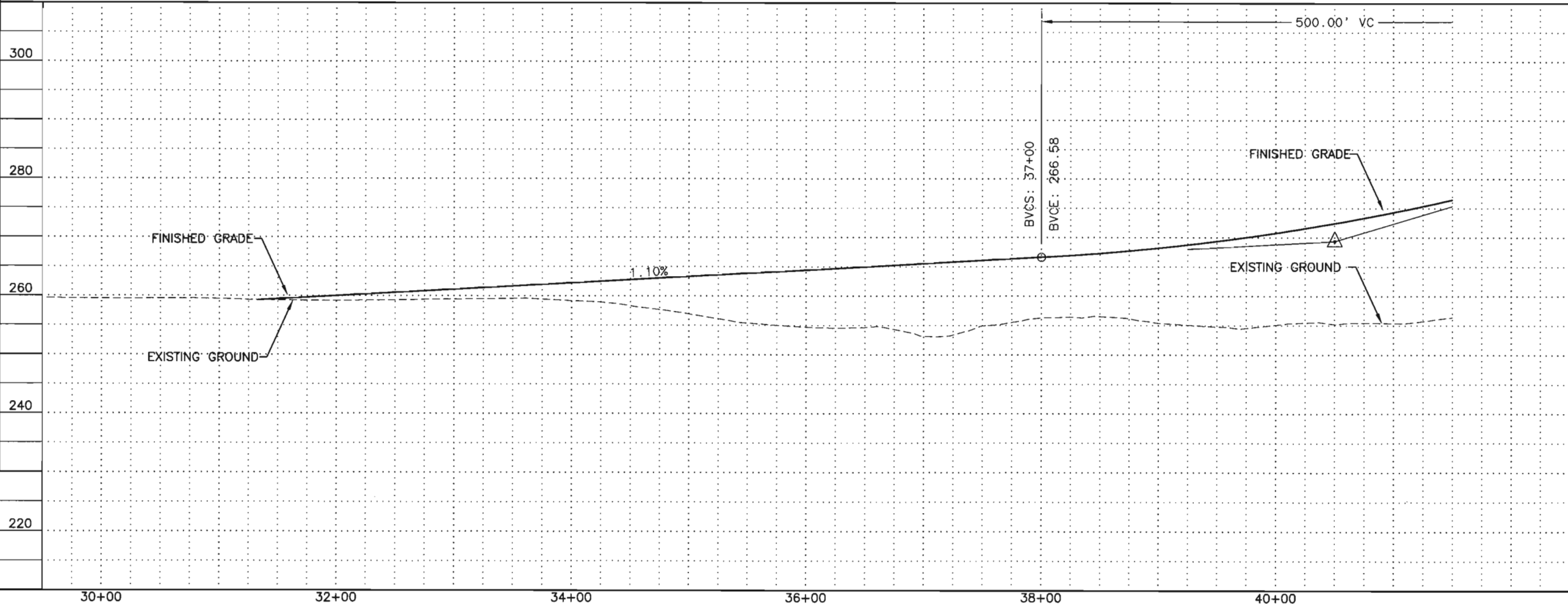
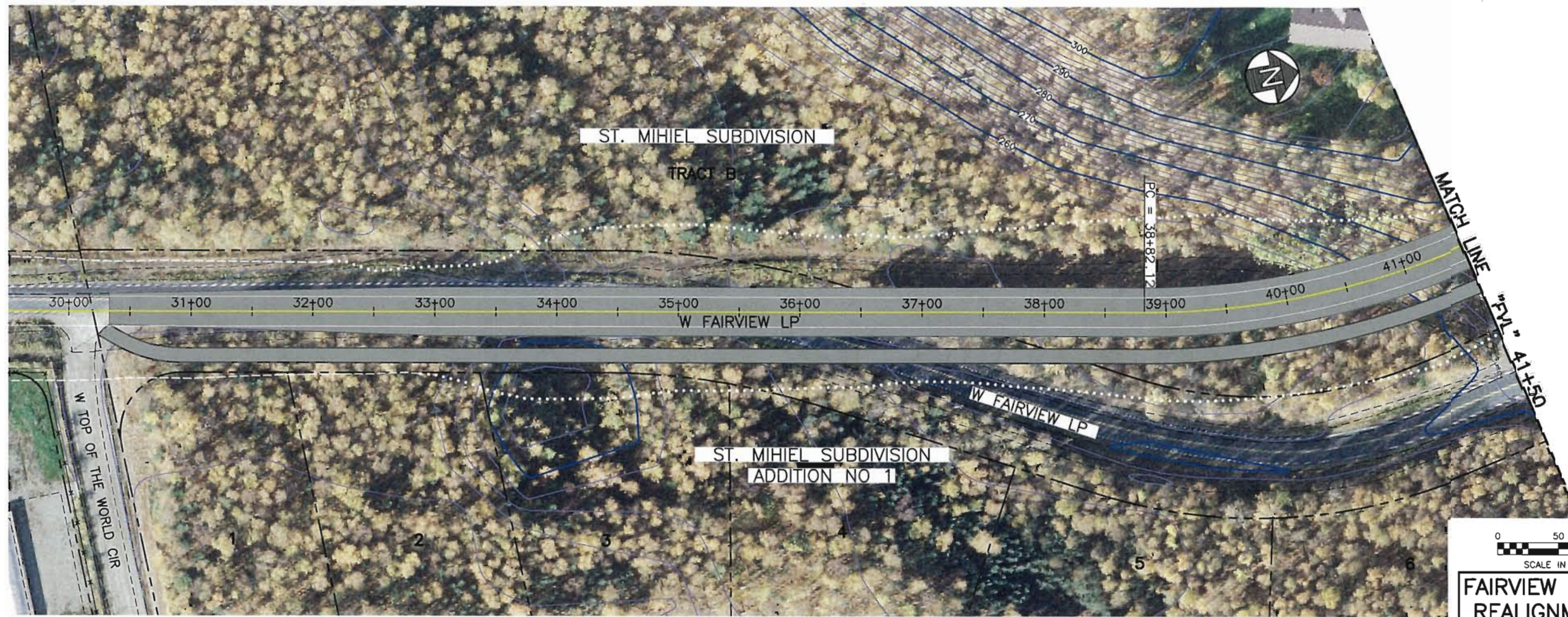


H:\jobs\09-006 Wasilla Mack Drive Extension (COW)\04-Preliminary Engineering Report\0400\Drawings\09006_04-ALT-FVL-F01-F02_1=50_12/22/09 at 19:04 by cob
 LAYOUT: FVL-1 FVL-3
 VIEW: A0_L1_5000_A0_L1_X7700
 XREF: 09006_00_BD02_09006_04_BASEMAP_09006_04_IMAGE_09006_04_PLOTSCALE_1=

DESIGNED BY: CAB
 CHECKED BY: DML
 DRAFTED BY: TLC
 SCALE: 1"=50'
 PLOT SCALE: as noted
 PLOT VIEW: DML



SHEET NO.	TOTAL SHEETS	
F1	F47	
STATE	YEAR	
ALASKA	2009-2010	
PROJECT DESIGNATION		
ADDENDUM NO.		
ATTACHMENT NO.		
REVISIONS		
NO.	DATE	DESCRIPTION



PRELIMINARY ENGINEERING
 NOT FOR CONSTRUCTION

WORK IN PROGRESS
 This document represents
 current concepts as of
 (See date @ left border)

HATTENBURG DILLEY & LINNELL
 CITY OF WASILLA
 DEPARTMENT OF PUBLIC WORKS
 WASILLA, ALASKA

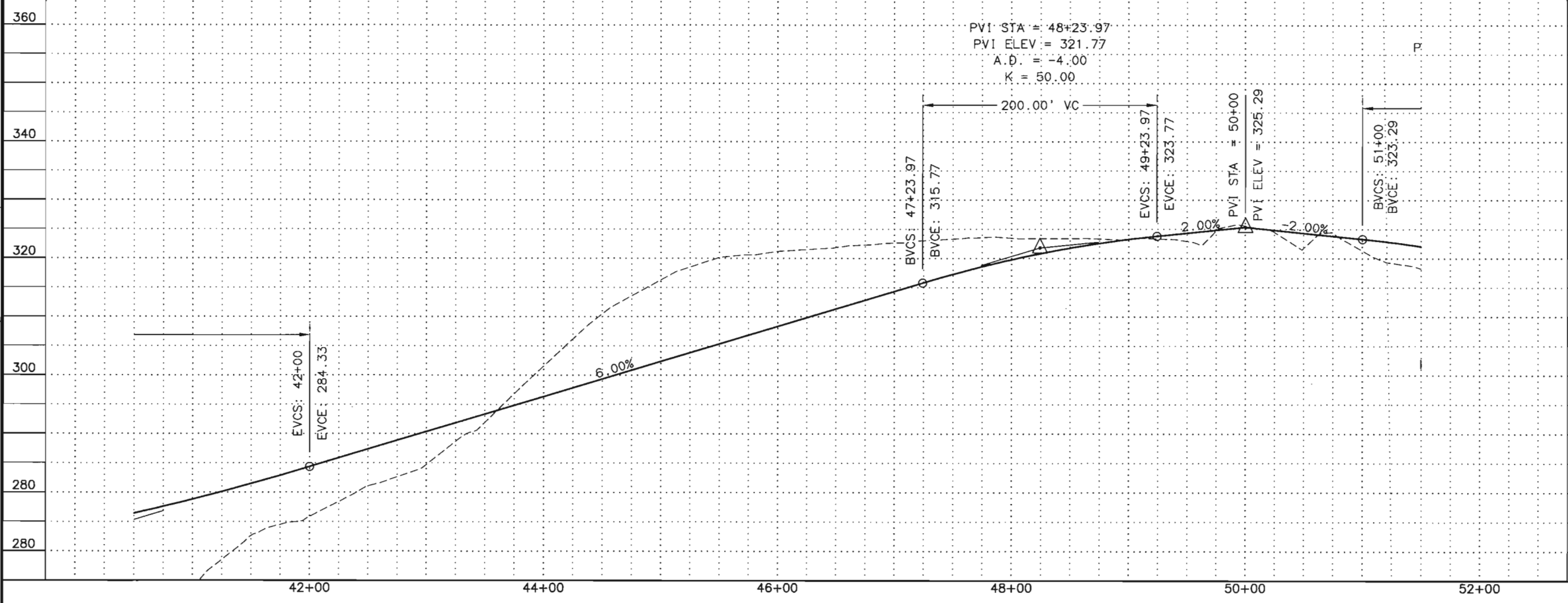
S. MACK DRIVE EXTENSION
 PRELIMINARY ENGINEERING
 REPORT

PLAN & PROFILE
 BOP TO "FVL" 41+50

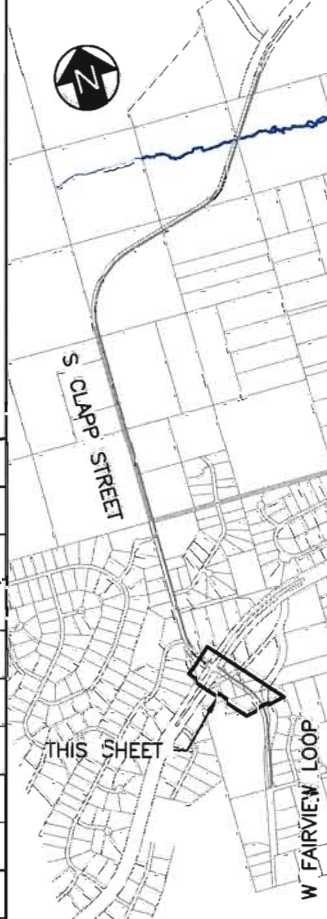
H:\projects\09-006 Wasilla Mack Drive Extension (COW)\04-Preliminary Engineering Report\CAD\Drawings\09006_04_Alt-FVL-F01-F02_1=50_12/22/08 at 19:04 by cab
 XREFS:
 SCALE 1:1
 PLOT SCALE: 1"=50'
 PLOT VIEW:
 DESIGNED BY: CAB
 CHECKED BY: DML
 DRAWN BY: TLC



FAIRVIEW LOOP REALIGNMENT



SHEET NO.	TOTAL SHEETS	
F2	F47	
STATE	YEAR	
ALASKA	2009-2010	
PROJECT DESIGNATION		
ADDENDUM NO.		
ATTACHMENT NO.		
REVISIONS		
NO.	DATE	DESCRIPTION



**PRELIMINARY ENGINEERING
NOT FOR CONSTRUCTION**

WORK IN PROGRESS
 This document represents
 current concepts as of
 (See date @ left border)

HATTENBURG DILLEY & LINNELL
 CITY OF WASILLA
 DEPARTMENT OF PUBLIC WORKS
 WASILLA, ALASKA

S. MACK DRIVE EXTENSION
 PRELIMINARY ENGINEERING
 REPORT

PLAN & PROFILE
 "FVL" 41+50 TO 51+50

