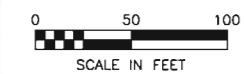


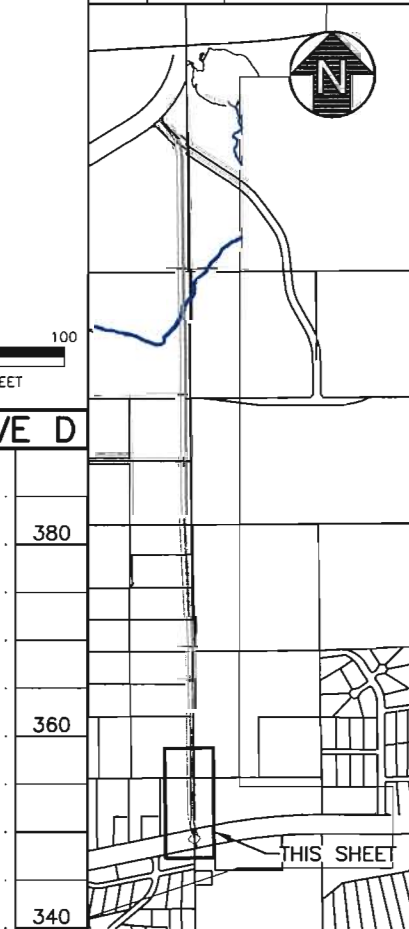
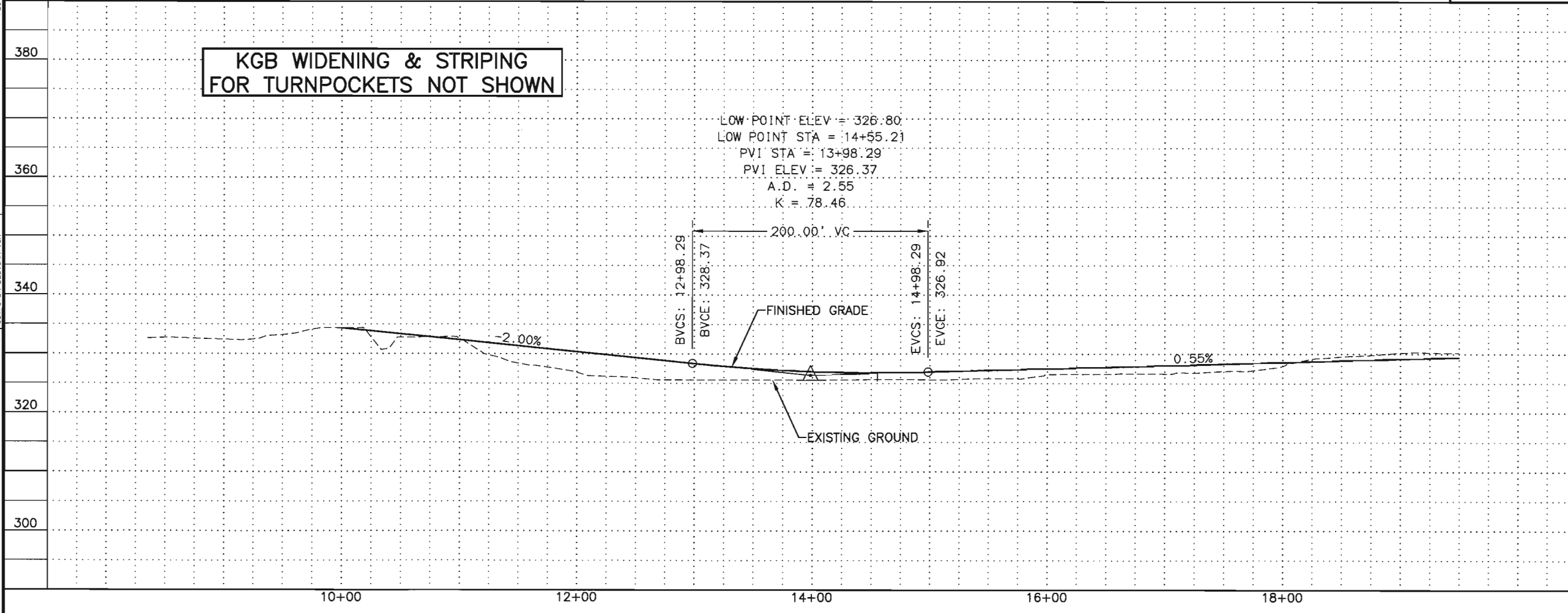
H:\pba\09-006 Wasilla Mack Drive Extension (COW)\04-Preliminary Engineering Report\CAD\Drawings\09006_04_ALT-D-F01-F06_1=50_12/22/09 at 15:17 by cab
 XREFS: CAB DESIGNED BY
 DWL CHECKED BY
 TLC DRAFTED BY
 SCALE 1"=200' COMPUTER DESIGNATION
 LAYOUT: F01-F06
 VIEW: F01_L_K7700
 XREF: 09006_00_B102, 09006_04_BASEMAP, 09006_04_IMAGE-1, 09006_04_COMPUTER DESIGNATION



MATCH LINE "D" 19+50



ALTERNATIVE D



| | | |
|---------------------|--------------|-------------|
| SHEET NO. | TOTAL SHEETS | |
| F39 | F47 | |
| STATE | YEAR | |
| ALASKA | 2009-2010 | |
| PROJECT DESIGNATION | | |
| ADDENDUM NO. | | |
| ATTACHMENT NO. | | |
| REVISIONS | | |
| NO. | DATE | DESCRIPTION |
| | | |
| | | |

PRELIMINARY ENGINEERING
NOT FOR CONSTRUCTION

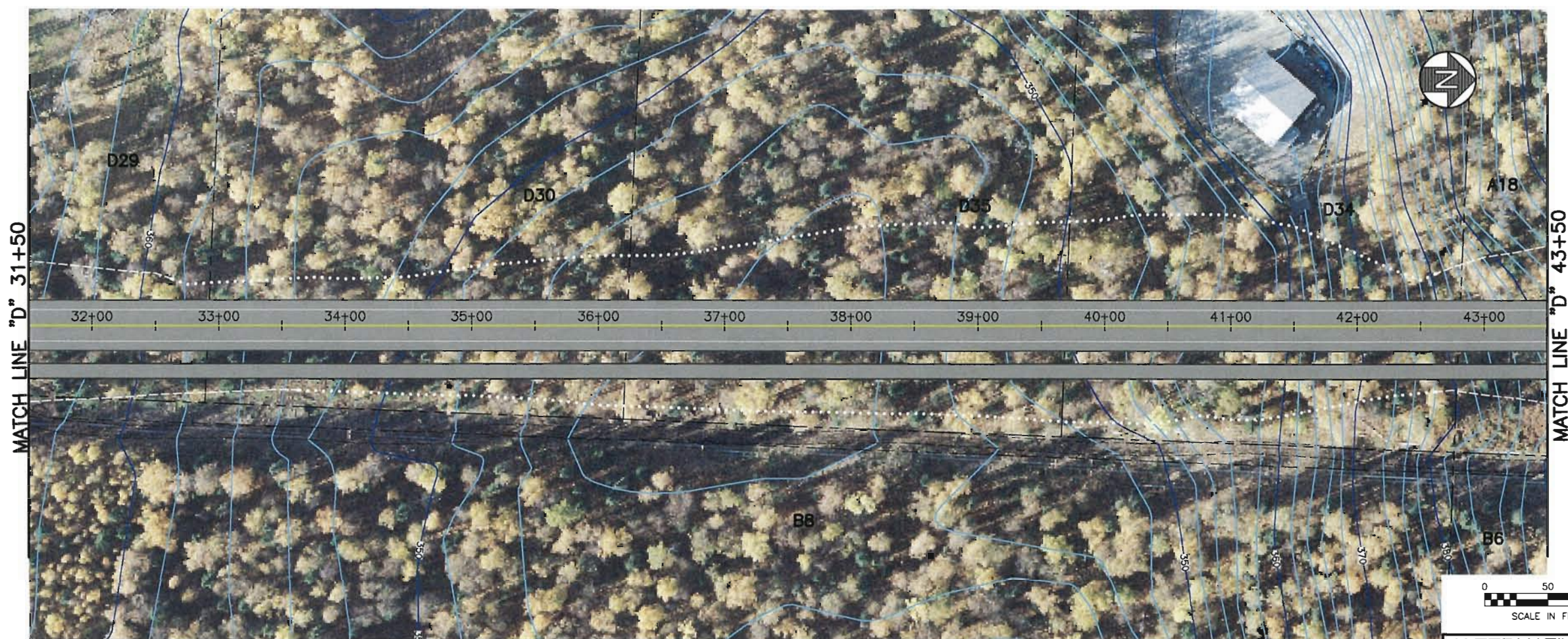
WORK IN PROGRESS
 This document represents
 current concepts as of _____
 (See date @ left border)

HATTENBURG DILLEY & LINNELL
 CITY OF WASILLA
 DEPARTMENT OF PUBLIC WORKS
 WASILLA, ALASKA

S. MACK DRIVE EXTENSION
 PRELIMINARY ENGINEERING
 REPORT

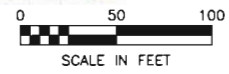
PLAN & PROFILE
 BOP TO "D" 19+50

H:\Jobs\09-006 Wasilla Meck Drive Extension (COW)\04-Preliminary Engineering Report\CAD\Drawings\09006_04_ALT-D-F01-F06_1=50_12/22/09 at 15:17 by cob
 LAYOUT: F01-F06
 VIEW: FO1-F06
 XREF: 09006_04_BASEMAP, 09006_04_IMAGE-1, 09006_04_COMPUTER DESIGNATION
 SCALE: 1"=50'
 XREFS:
 PLOT SCALE: odot_nodot_15
 PLOT VIEW: odot_nodot_15
 DESIGNED BY: CAB
 CHECKED BY: DWL
 DRAFTED BY: TLC

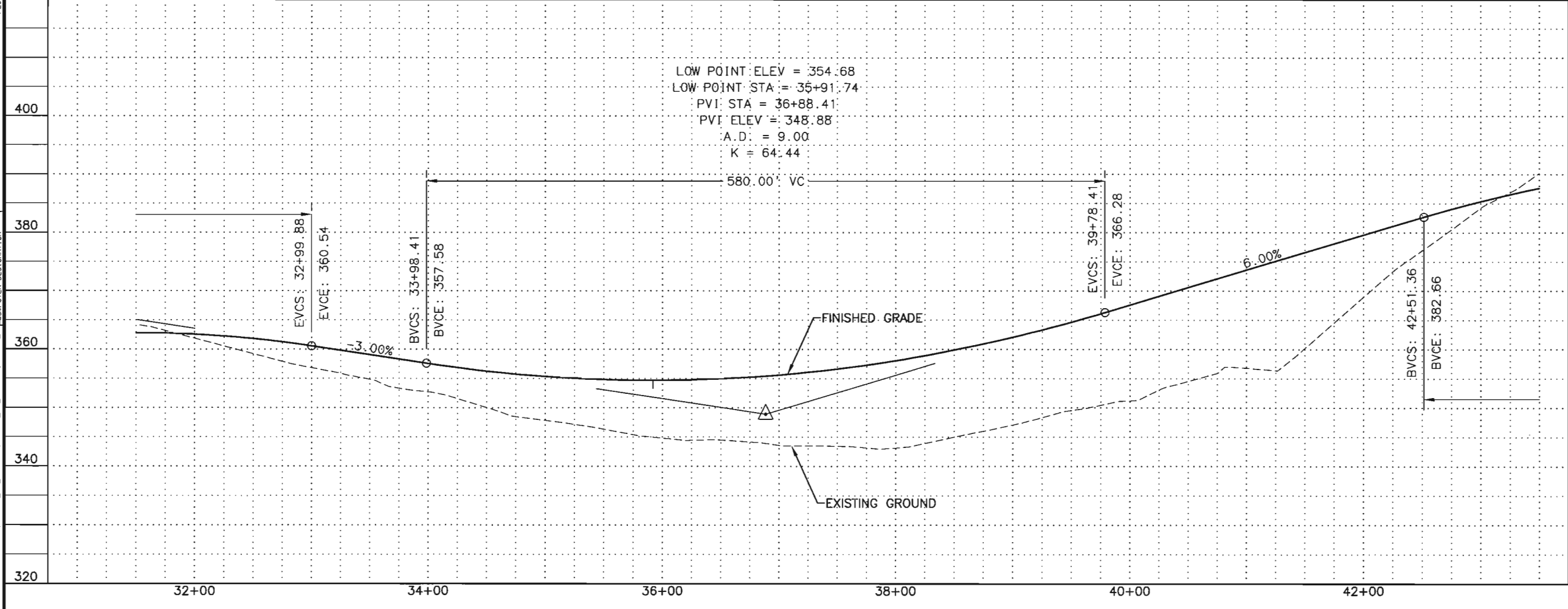


MATCH LINE "D" 31+50

MATCH LINE "D" 43+50



ALTERNATIVE D



| | | |
|---------------------|--------------|-------------|
| SHEET NO. | TOTAL SHEETS | |
| F41 | F47 | |
| STATE | YEAR | |
| ALASKA | 2009-2010 | |
| PROJECT DESIGNATION | | |
| ADDENDUM NO. | | |
| ATTACHMENT NO. | | |
| REVISIONS | | |
| NO. | DATE | DESCRIPTION |
| | | |
| | | |
| | | |

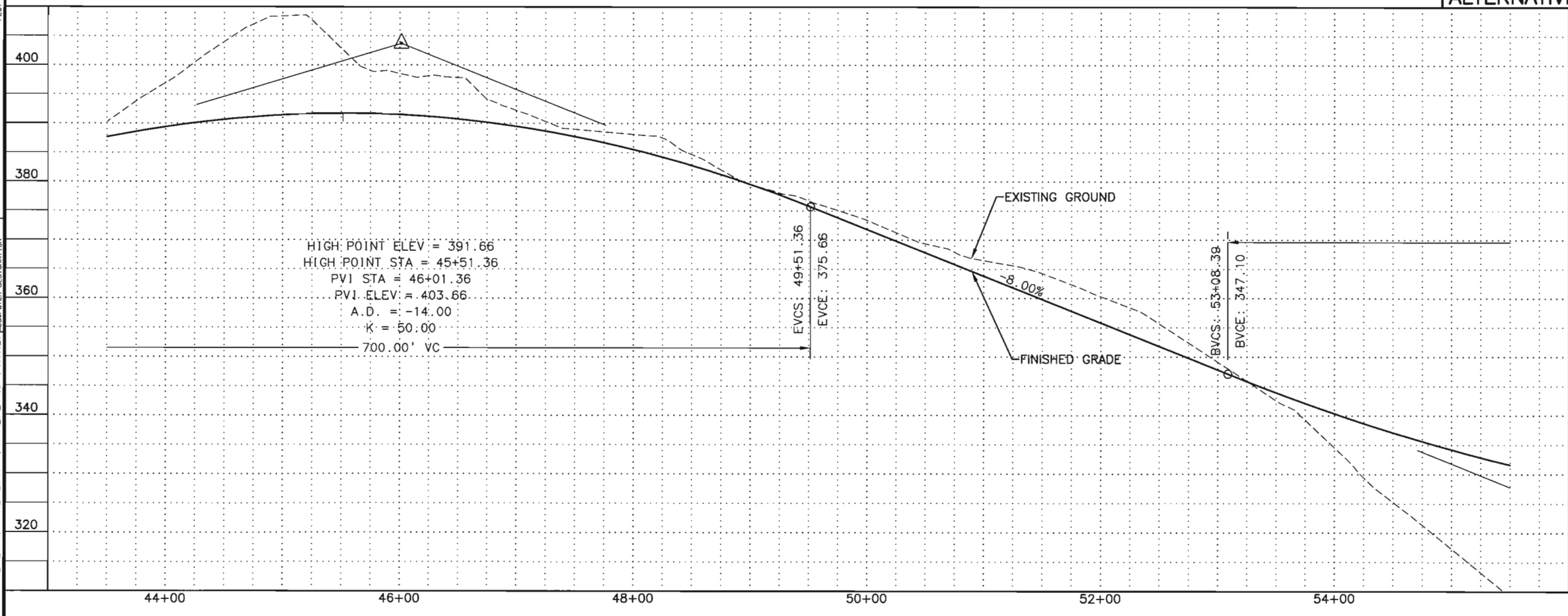
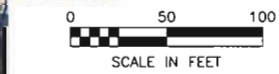
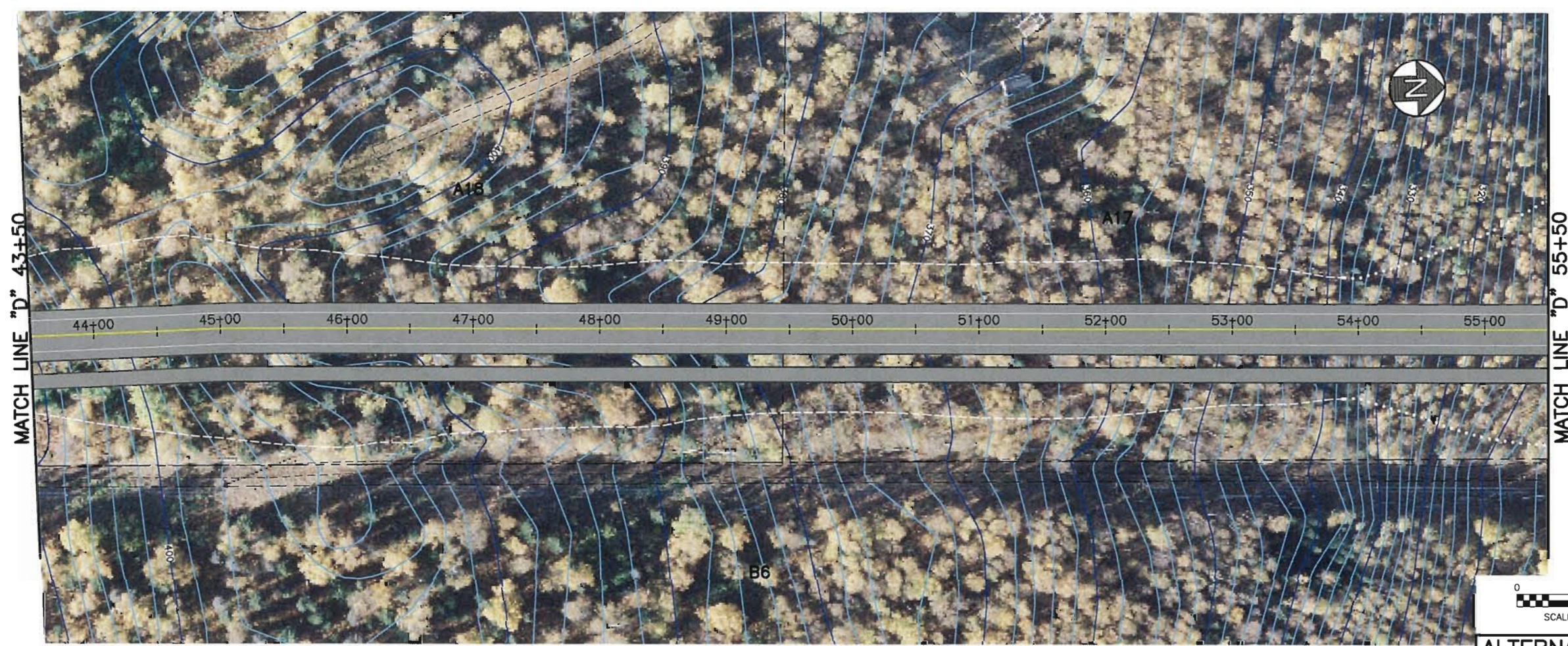
PRELIMINARY ENGINEERING
NOT FOR CONSTRUCTION

WORK IN PROGRESS
This document represents current concepts as of (See date @ left border)

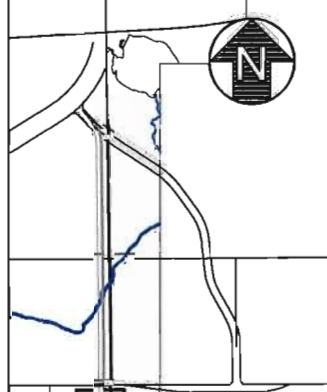
HATTENBURG DILLEY & LINNELL
CITY OF WASILLA
DEPARTMENT OF PUBLIC WORKS
WASILLA, ALASKA

S. MACK DRIVE EXTENSION
PRELIMINARY ENGINEERING
REPORT
PLAN & PROFILE
"D" 31+50 TO "D" 43+50

H:\jobs\09-006 Wasilla Meek Drive Extension (COW)\04--Preliminary Engineering Report\CAD\Drawings\09006_04_ALT-D-F01-F06_1=50_12/22/09 at 15:17 by ccb
 LAYOUT: F01-F06
 VIEW: FO_1-X7700
 REF: 09006_00-B002, 09006_04-BASEMAP, 09006_04-IMAGE-1, 09006_04-COMPUTER DESIGNATION
 SCALE: 1"=50'
 XREFS:
 PLOT SCALE: odot_ha.dwg
 PLOT VIEW:
 DESIGNED BY: CAB
 CHECKED BY: DWL
 DRAFTED BY: TLC



| | | |
|---------------------|--------------|-------------|
| SHEET NO. | TOTAL SHEETS | |
| F42 | F47 | |
| STATE | YEAR | |
| ALASKA | 2009-2010 | |
| PROJECT DESIGNATION | | |
| ADDENDUM NO. | | |
| ATTACHMENT NO. | | |
| REVISIONS | | |
| NO. | DATE | DESCRIPTION |
| | | |
| | | |
| | | |



ALTERNATIVE D



PRELIMINARY ENGINEERING
NOT FOR CONSTRUCTION

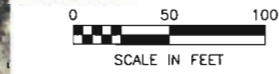
WORK IN PROGRESS
 This document represents current concepts as of (See date @ left border)

HATTENBURG DILLEY & LINNELL
 CITY OF WASILLA
 DEPARTMENT OF PUBLIC WORKS
 WASILLA, ALASKA

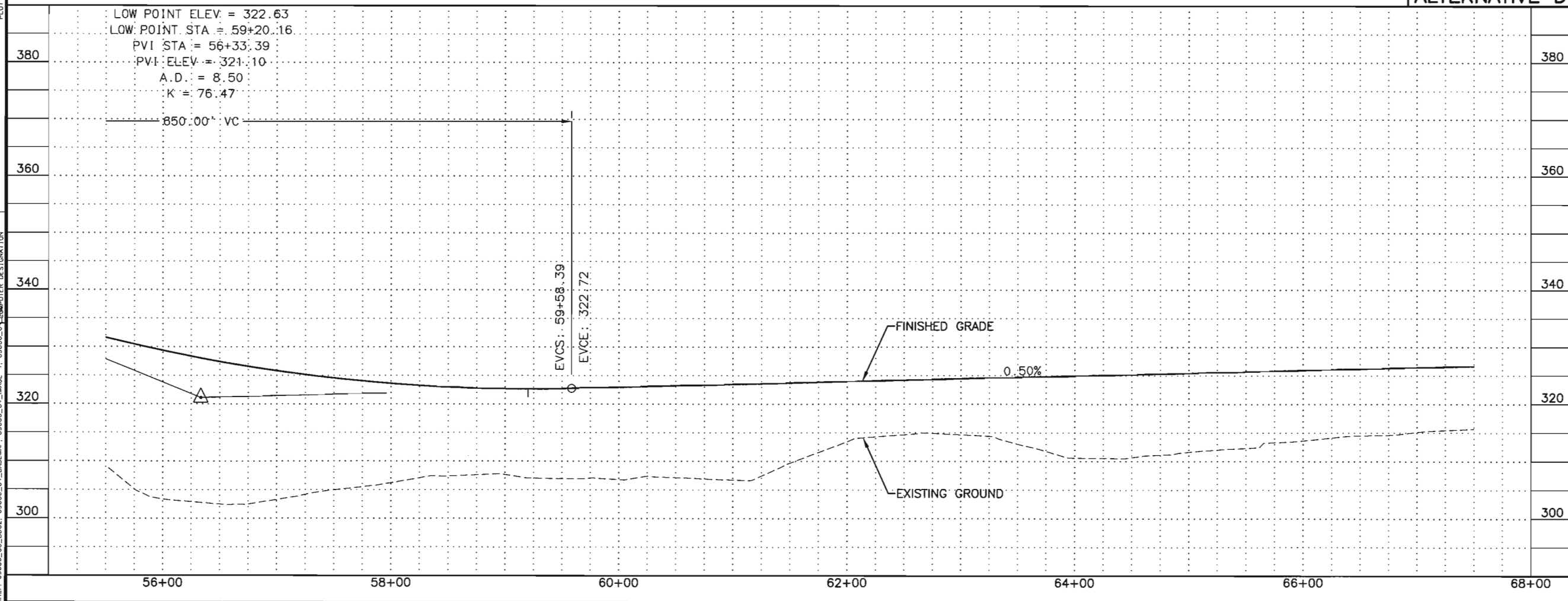
S. MACK DRIVE EXTENSION
 PRELIMINARY ENGINEERING
 REPORT

PLAN & PROFILE
 "D" 43+50 TO "D" 55+50

H:\jbsa\09-006 Wasilla Mack Drive Extension (COW)\04-Preliminary Engineering Report\CAD\Drawings\08006_04_Alt-D-01-F06_1-50_12/22/09 at 15:17 by cbb
 LAYOUT: F01-F06
 VIEW: F05_L_A7700
 XREF: 08006_00_B002, 08006_04_BASEMAP, 08006_04_IMAGE-1, 08006_04_COMPUTER DESIGNATION
 SCALE: 1" = 40' (HORIZONTAL), 1" = 10' (VERTICAL)
 XREFS:
 PLOT CTB: 08006_04.ctb
 PLOT SCALE: 1" = 40' (HORIZONTAL), 1" = 10' (VERTICAL)
 DESIGNED BY: CAB
 CHECKED BY: DWL
 DRAFTED BY: TLC



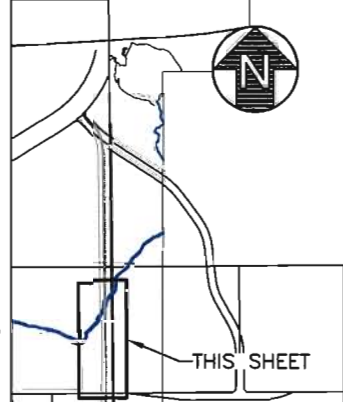
ALTERNATIVE D



| | |
|-----------|--------------|
| SHEET NO. | TOTAL SHEETS |
| F43 | F47 |
| STATE | YEAR |
| ALASKA | 2009-2010 |

| | |
|---------------------|--|
| PROJECT DESIGNATION | |
| ADDENDUM NO. | |
| ATTACHMENT NO. | |

| REVISIONS | | |
|-----------|------|-------------|
| NO. | DATE | DESCRIPTION |
| | | |
| | | |



PRELIMINARY ENGINEERING
 NOT FOR CONSTRUCTION

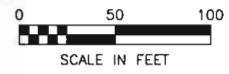
WORK IN PROGRESS
 This document represents current concepts as of (See date @ left border)

HATTENBURG DILLEY & LINNELL
 CITY OF WASILLA
 DEPARTMENT OF PUBLIC WORKS
 WASILLA, ALASKA

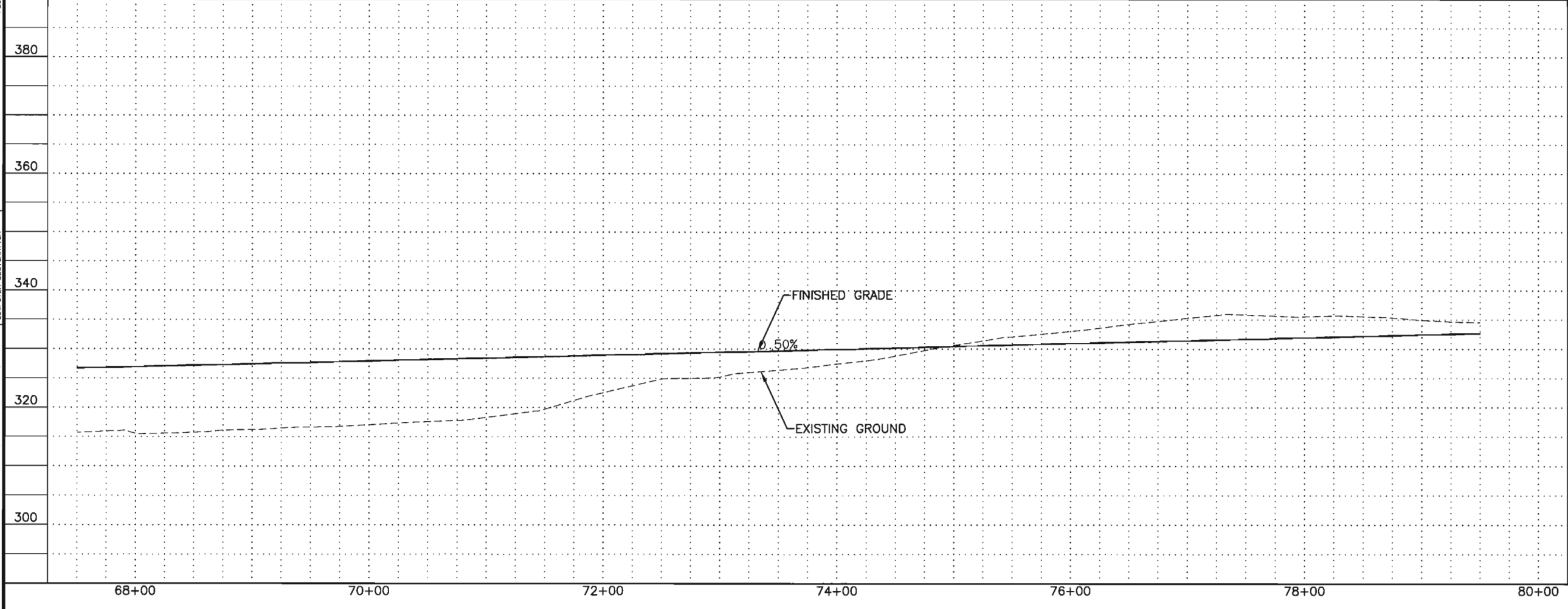
S. MACK DRIVE EXTENSION
 PRELIMINARY ENGINEERING
 REPORT

PLAN & PROFILE
 "D" 55+50 TO "D" 67+50

H:\Jobs\09-006 Wasilla Mack Drive Extension (COW)\04-Preliminary Engineering Report\CAD\Drawings\09006_04_ALT-D-F01-F06_1=50_12/22/09 at 15:17 by ccb
 XREFS: SCALE: 1"=200'
 PLOT CTB: odd_ms.ctb
 PLOT SCALE: 1"=200'
 PLOT VIEW: COMPUTER DESIGNATION
 DESIGNED BY: CAB
 CHECKED BY: DWL
 DRAFTED BY: TLC
 LAYOUT: F01-F06
 VIEW: F06_PL_X7700
 REF: 09006_04_BASEMAP, 09006_04_IMAGE-1, 09006_04_COMPUTER DESIGNATION



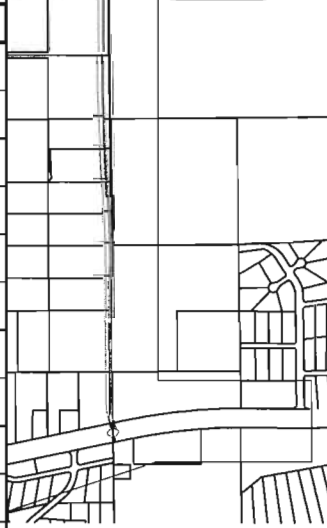
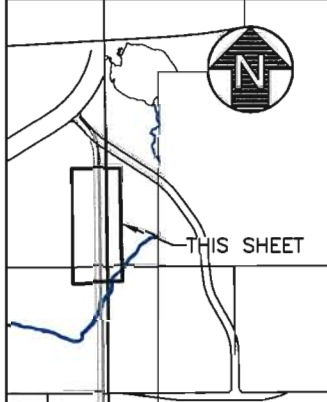
ALTERNATIVE D



| | |
|-----------|--------------|
| SHEET NO. | TOTAL SHEETS |
| F44 | F47 |
| STATE | YEAR |
| ALASKA | 2009-2010 |

PROJECT DESIGNATION
 ADDENDUM NO.
 ATTACHMENT NO.

| REVISIONS | | |
|-----------|------|-------------|
| NO. | DATE | DESCRIPTION |
| | | |
| | | |
| | | |



**PRELIMINARY ENGINEERING
 NOT FOR CONSTRUCTION**

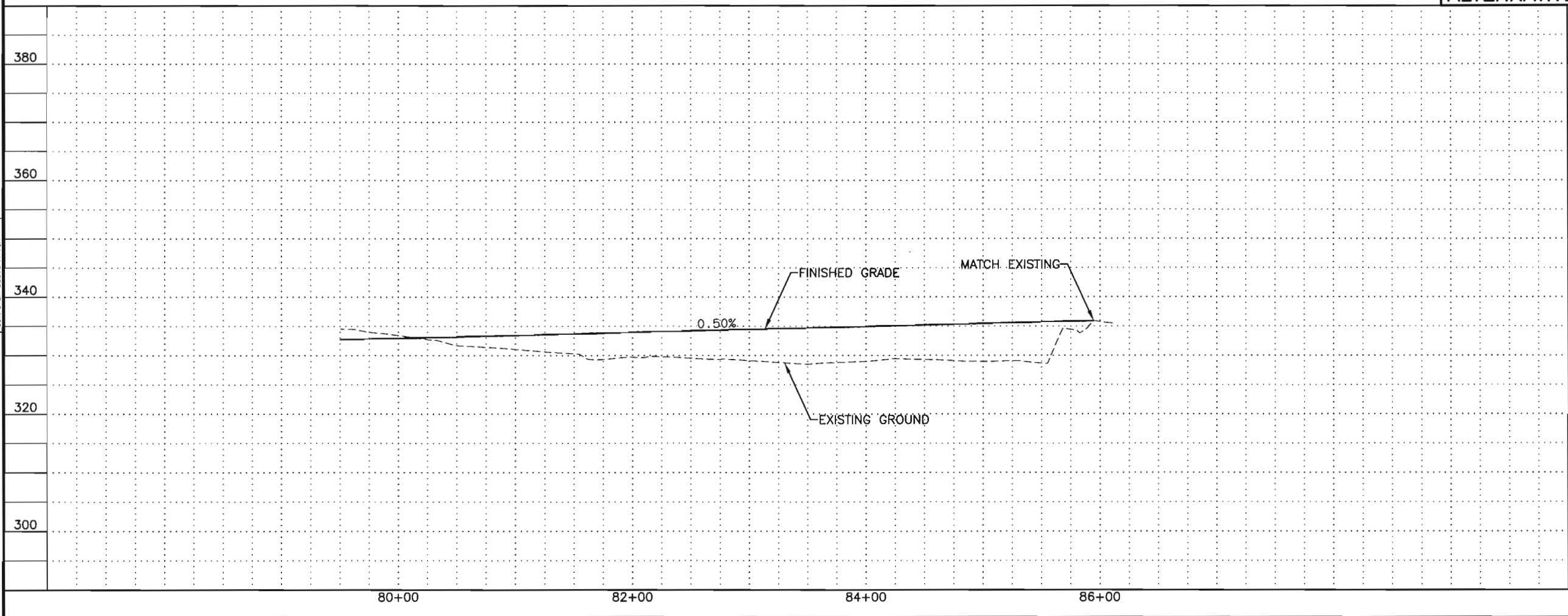
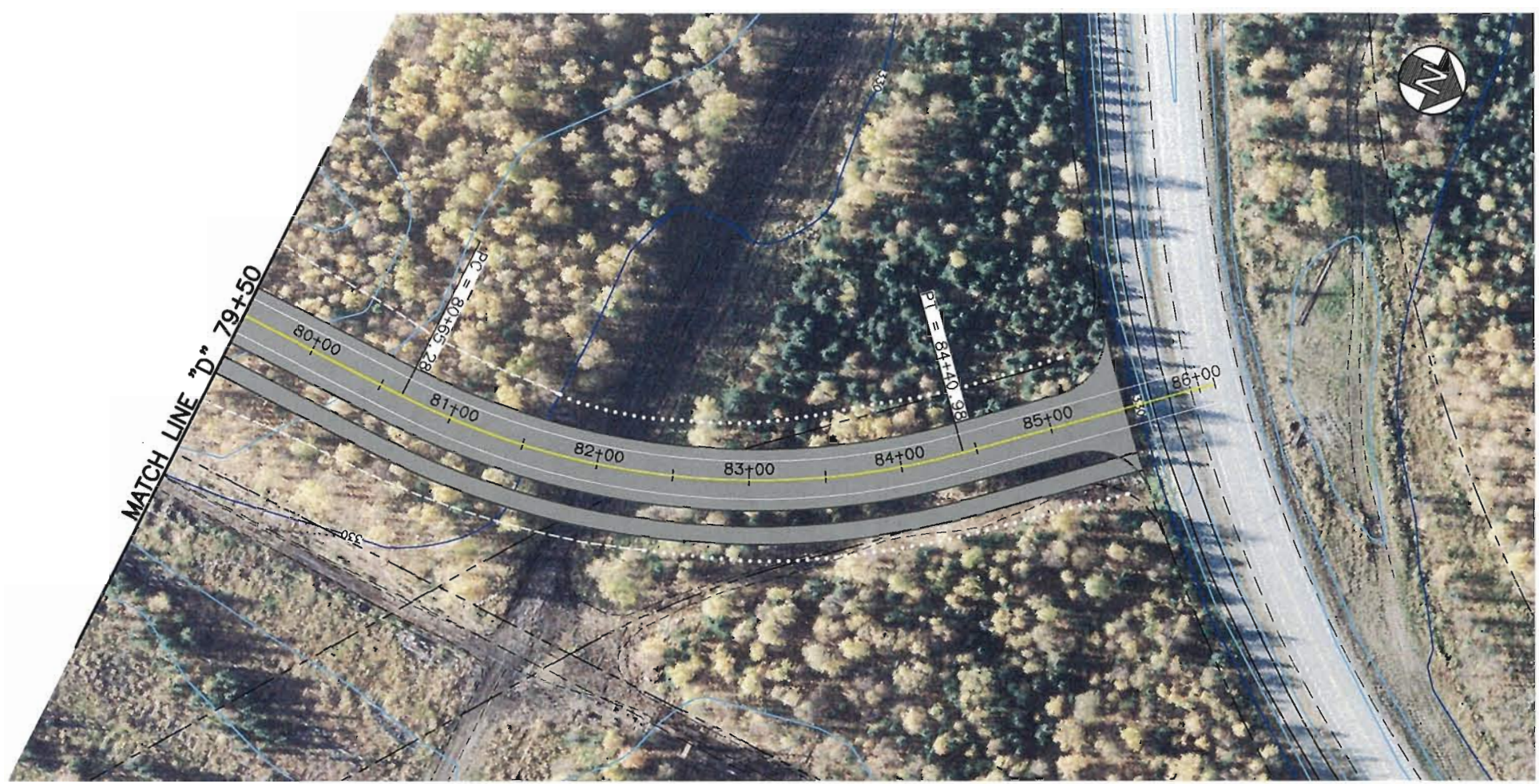
WORK IN PROGRESS
 This document represents current concepts as of (See date @ left border)

HATTENBURG DILLEY & LINNELL
 CITY OF WASILLA
 DEPARTMENT OF PUBLIC WORKS
 WASILLA, ALASKA

S. MACK DRIVE EXTENSION
 PRELIMINARY ENGINEERING
 REPORT

PLAN & PROFILE
 "D" 67+50 TO "D" 79+50

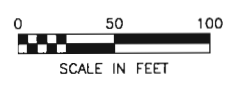
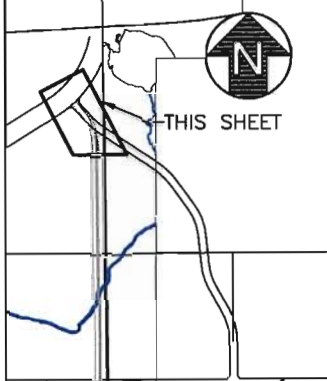
H:\jms\09-006 Wasilla Mack Drive Extension (COW)\04-Preliminary Engineering Report\CAD\Drawings\09006_04_ALT-D-F01-F06_1-50_12/22/09 at 15:17 by cob
 LAYOUT: F01-F06
 VIEW: F01-F06
 XREFS:
 SCALE: 1"=50'
 PLOT SCALE: 1"=50'
 PLOT VIEW:
 DESIGNED BY: CAB
 CHECKED BY: DML
 DRAFTED BY: TLC



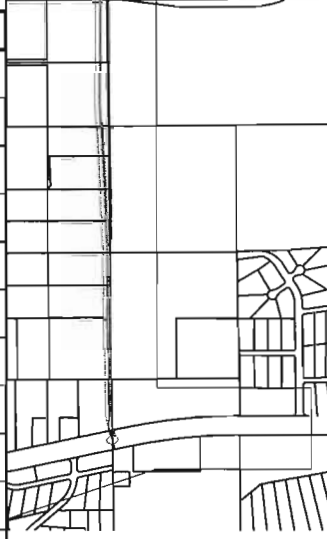
| | |
|---------------------|--------------|
| SHEET NO. | TOTAL SHEETS |
| F45 | F47 |
| STATE | YEAR |
| ALASKA | 2009-2010 |
| PROJECT DESIGNATION | |

| |
|----------------|
| ADDENDUM NO. |
| ATTACHMENT NO. |

| REVISIONS | | |
|-----------|------|-------------|
| NO. | DATE | DESCRIPTION |
| | | |
| | | |
| | | |



ALTERNATIVE D



PRELIMINARY ENGINEERING
NOT FOR CONSTRUCTION

WORK IN PROGRESS
 This document represents
 current concepts as of
 (See date @ left border)

HATTENBURG DILLEY & LINNELL
 CITY OF WASILLA
 DEPARTMENT OF PUBLIC WORKS
 WASILLA, ALASKA

S. MACK DRIVE EXTENSION
 PRELIMINARY ENGINEERING
 REPORT

PLAN & PROFILE
 "D" 79+50 TO EOP