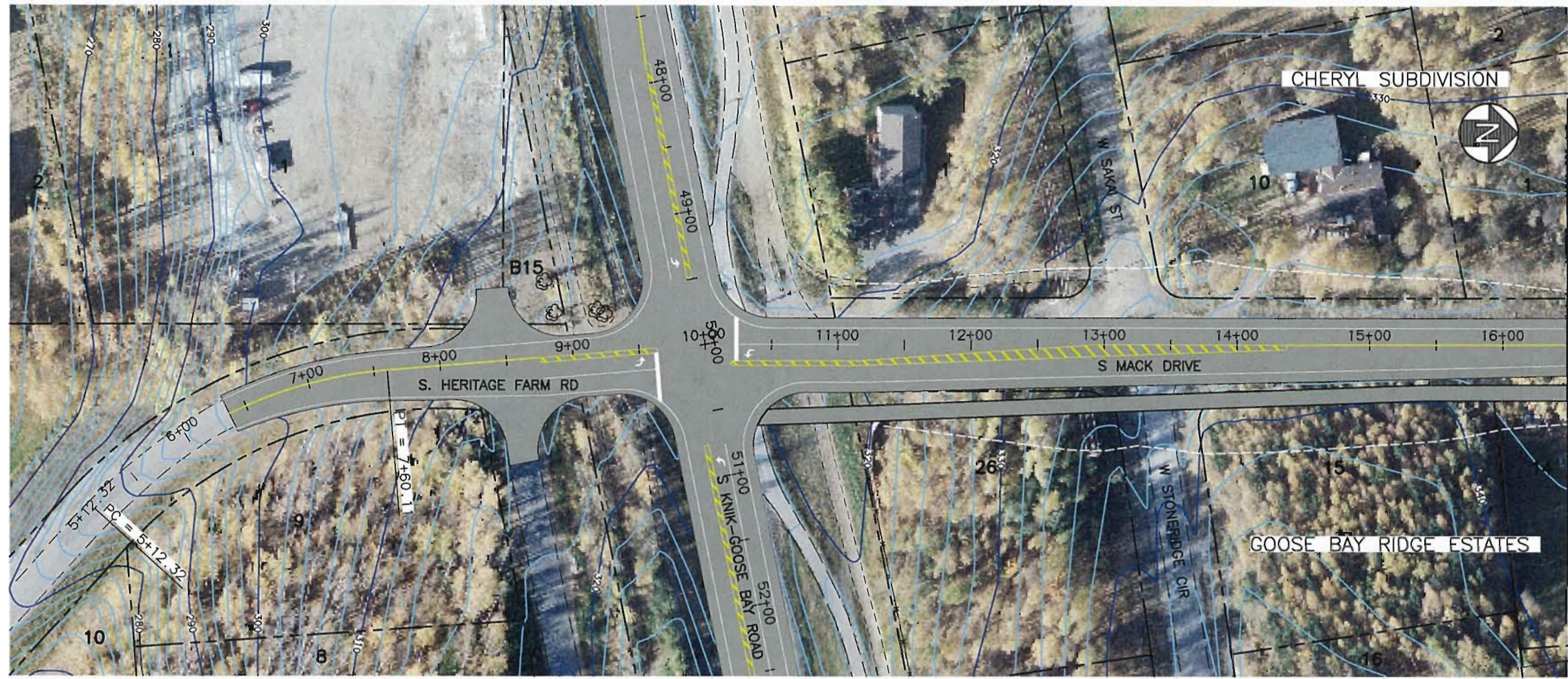
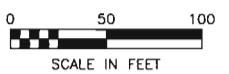


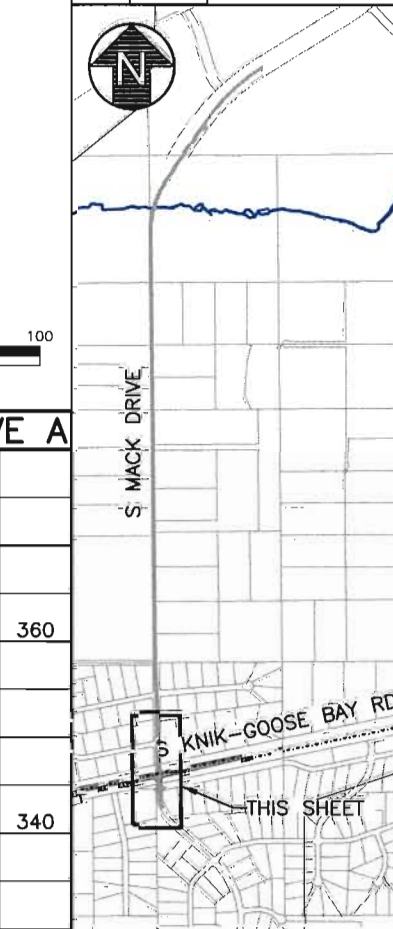
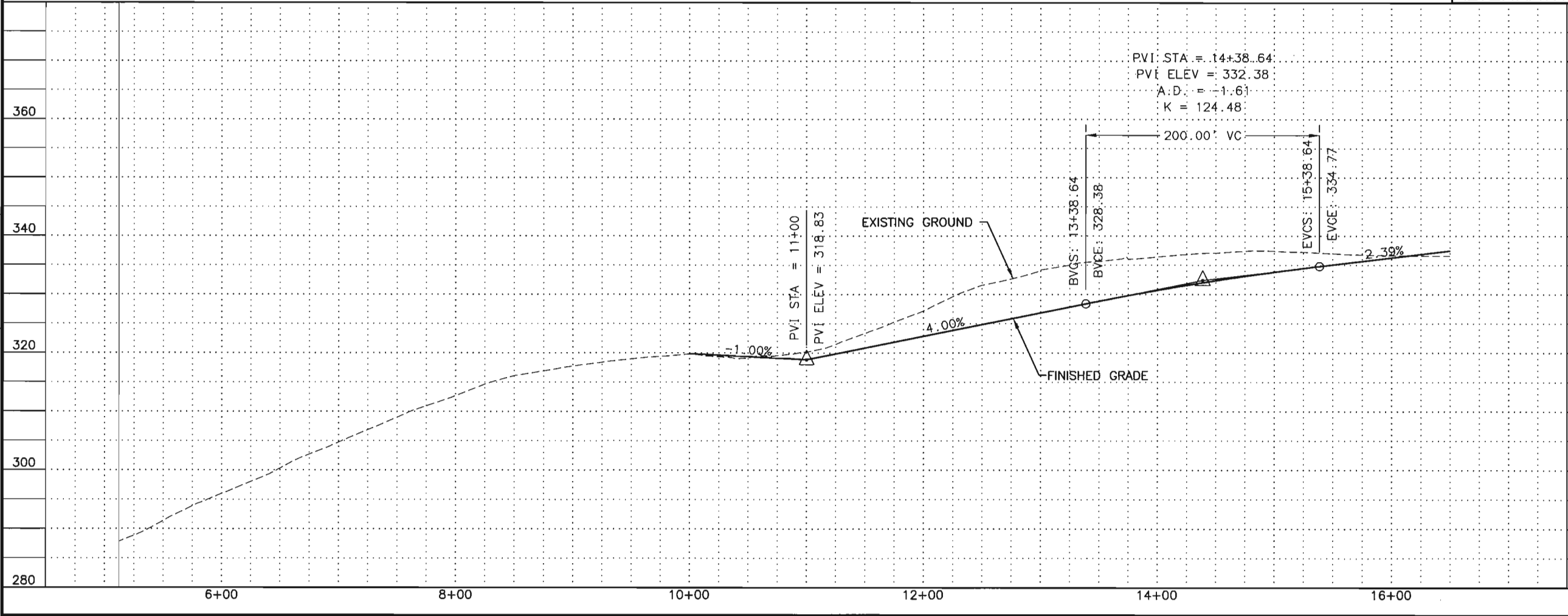
H:\jobs\09-006 Wasilla Mack Drive Extension (COW)\04-Preliminary Engineering Report\0400\Drawings\09006_04_Alt_A-F01-F06_1-50_12/22/09 at 11:00 by cob
 XREFS:
 SCALE: 1" = 40'
 COMPUTER DESIGNATION
 XREF: 09006_00-BD02, 09006_04-BASEMAP, 09006_04-IMAGE-1, 09006_04-COMPUTER DESIGNATION
 PLOT SCALE: 1" = 40'
 PLOT VIEW:
 DESIGNED BY: CDB
 CHECKED BY: DML
 DRAWN BY: TLC



MATCH LINE "A" 16+50



ALTERNATIVE A



PRELIMINARY ENGINEERING
NOT FOR CONSTRUCTION

WORK IN PROGRESS
This document represents
current concepts as of
(See date @ left border)

HATTENBURG DILLEY & LINNELL

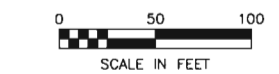
CITY OF WASILLA
DEPARTMENT OF PUBLIC WORKS
WASILLA, ALASKA

S. MACK DRIVE EXTENSION
PRELIMINARY ENGINEERING
REPORT

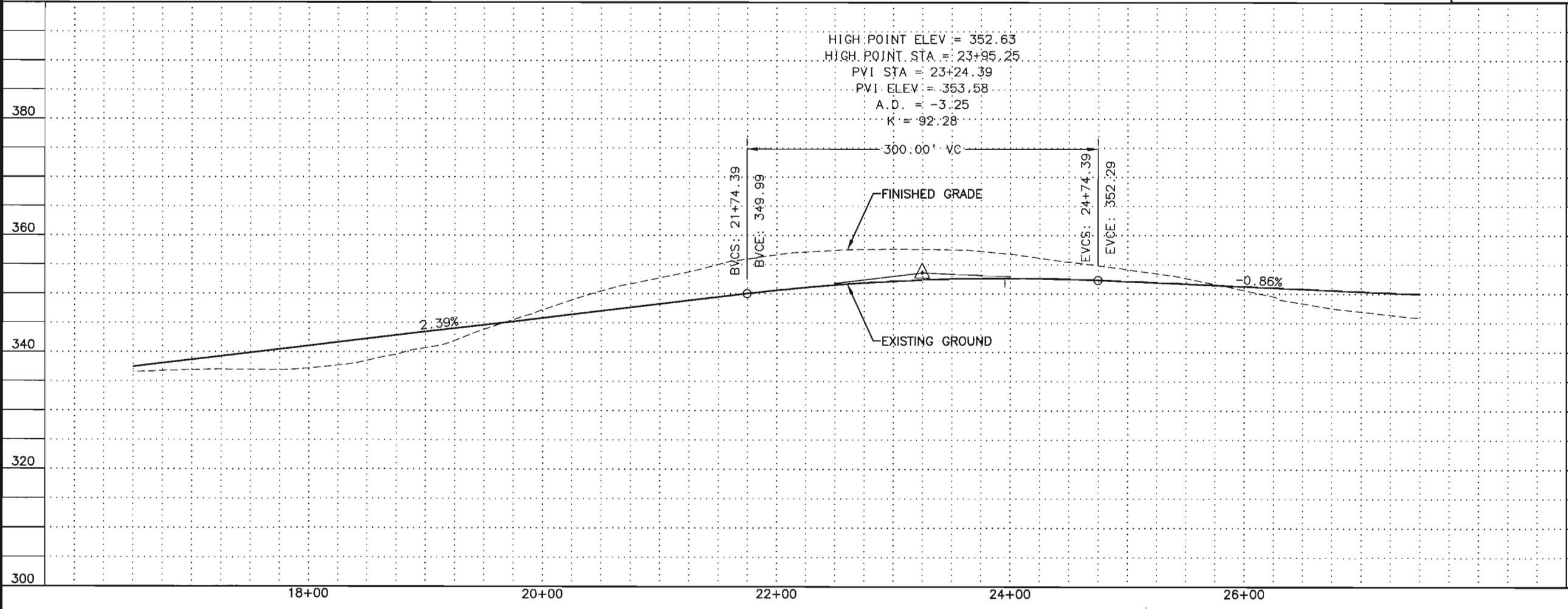
PLAN & PROFILE
BOP TO "A" 16+50

SHEET NO.	TOTAL SHEETS	
F4	F47	
STATE	YEAR	
ALASKA	2009-2010	
PROJECT DESIGNATION		
ADDENDUM NO.		
ATTACHMENT NO.		
REVISIONS		
NO.	DATE	DESCRIPTION

H:\Jobs\09-006 Wasilla Mack Drive Extension (COW)\04-Preliminary Engineering Report\CAD Drawings\09006_04_A1-A-F01-F06_1-50_12/22/09 at 11:00 by ccb
 XREFS: PLOT CIB: oad_rh.dwg L19 DESIGNED BY: CAB
 SCALE: 1"=40' COMPUTER DESIGNATION: CHECKED BY: DML
 LAYOUT: F01-F08 PLOT SCALE: 1"=40' DRAWN BY: TIC
 VIEW: F02-H_X7700
 XREF: 09006_00_B002_09006_04_BASEMAP_09006_04_IMAGE-1_09006_04_COMPUTER DESIGNATION



ALTERNATIVE A

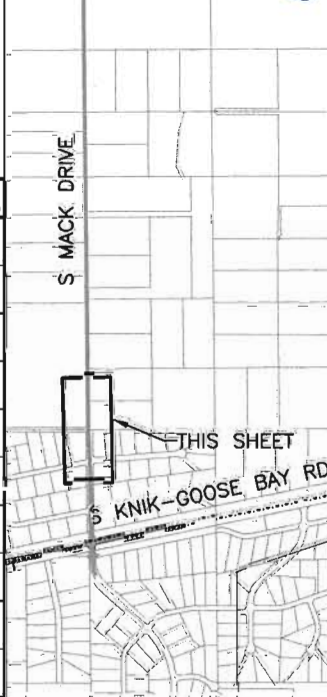
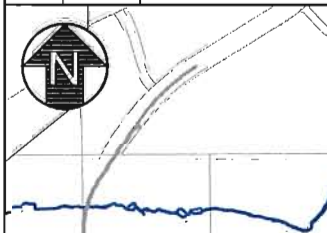


SHEET NO.	TOTAL SHEETS
F5	F47
STATE	YEAR
ALASKA	2009-2010

PROJECT DESIGNATION
 ADDENDUM NO.

ATTACHMENT NO.
 REVISIONS

NO.	DATE	DESCRIPTION



PRELIMINARY ENGINEERING
 NOT FOR CONSTRUCTION

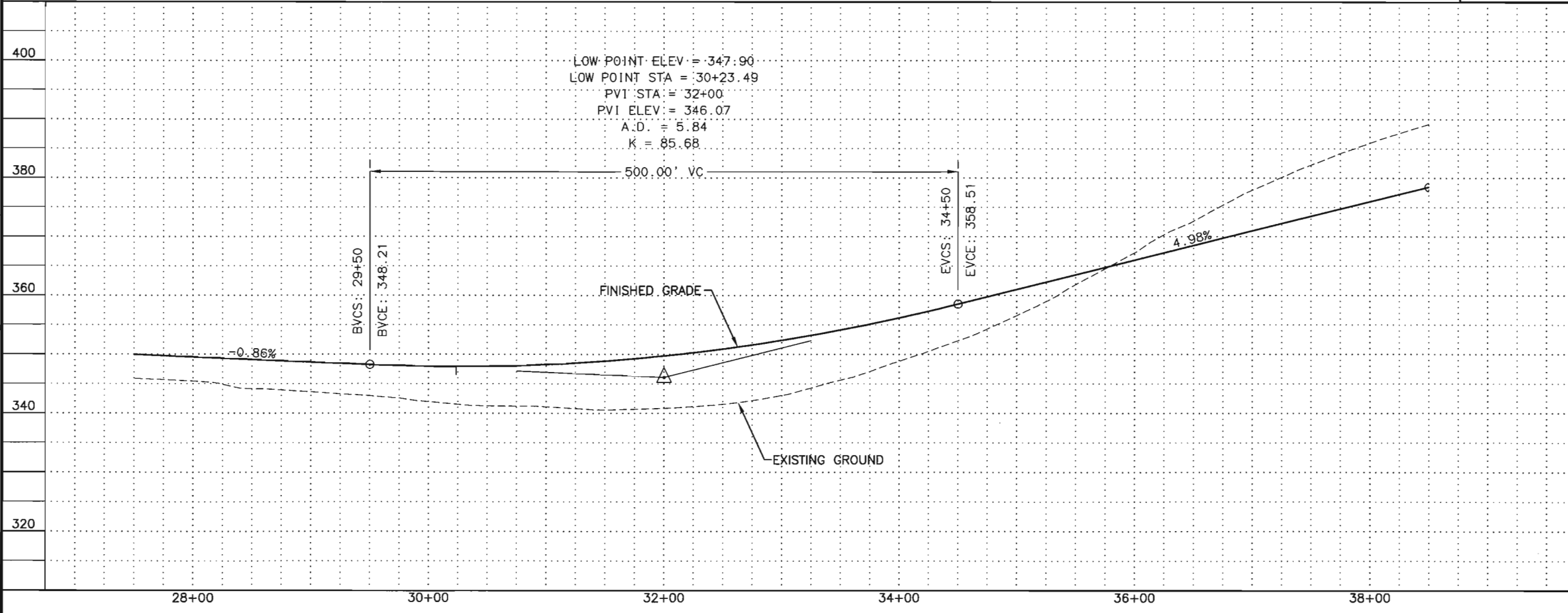
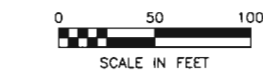
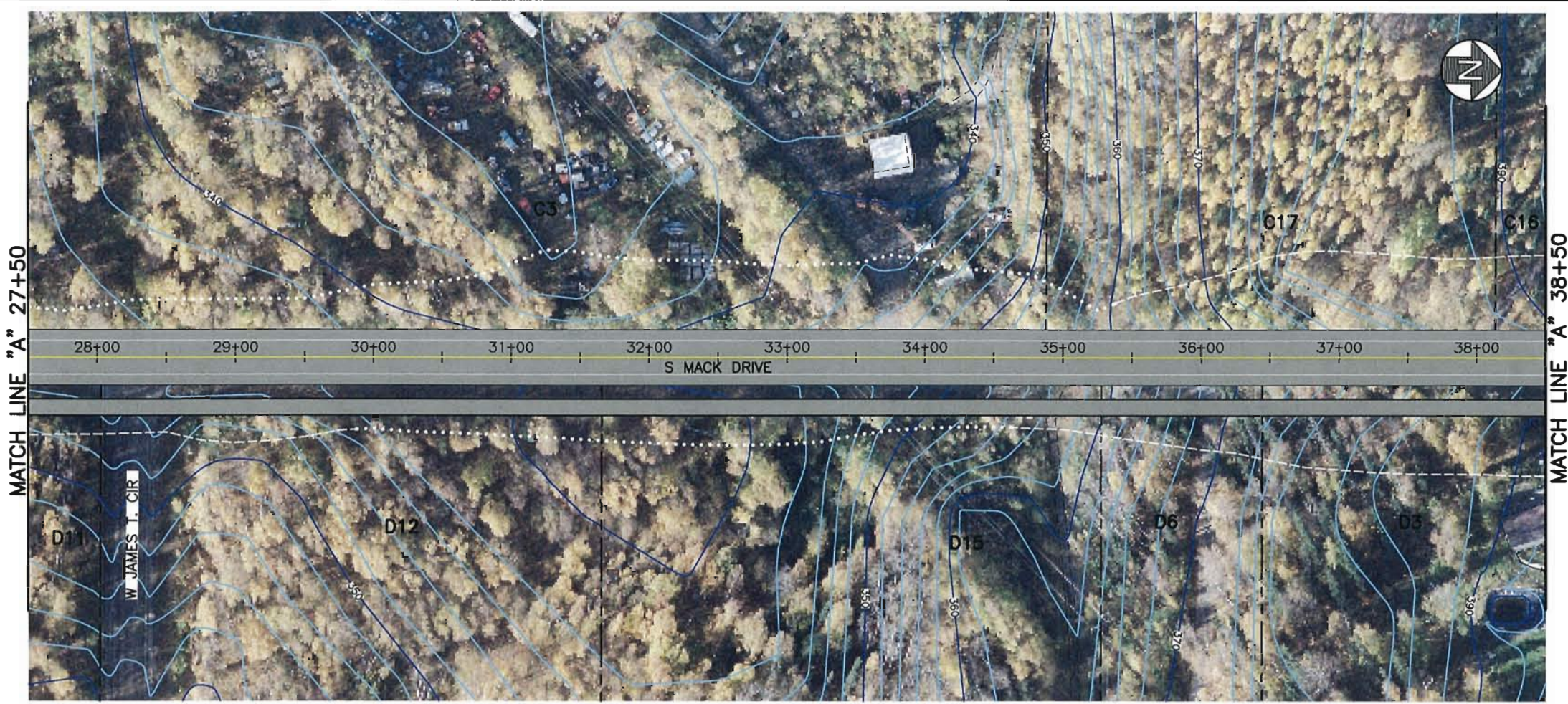
WORK IN PROGRESS
 This document represents
 current concepts as of
 (See date @ left border)

HATTENBURG DILLEY & LINNELL
 CITY OF WASILLA
 DEPARTMENT OF PUBLIC WORKS
 WASILLA, ALASKA

S. MACK DRIVE EXTENSION
 PRELIMINARY ENGINEERING
 REPORT

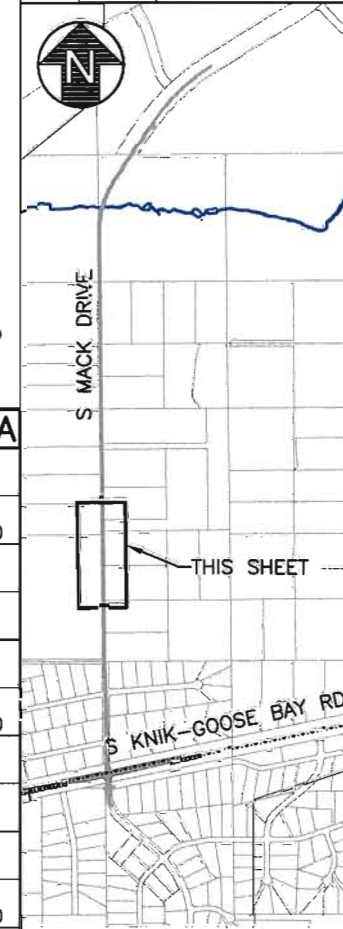
PLAN & PROFILE
 "A" 16+50 TO "M" 27+50

H:\jobs\09-006 Wasilla Mack Drive Extension (COW)\04-Preliminary Engineering Report\CAD\Drawings\09006_04_A1-A1-A-F01-F06_1-50_12/22/09 at 11:00 by cob
 XREFS:
 PLOT CIB: 09006_04_A1-A1-A-F01-F06_1-50_12/22/09 at 11:00 by cob
 CHECKED BY: DML
 DRAWN BY: TLC
 SCALE: 1" = 40'
 COMPUTER DESIGNATION: 09006_04_BASEMAP_09006_04_IMAGE-1_09006_04_COMPUTER DESIGNATION
 LAYOUT: F01-F06
 VIEW: F01-F06
 XREF: 09006_04_B002_09006_04_BASEMAP_09006_04_IMAGE-1_09006_04_COMPUTER DESIGNATION



SHEET NO.	TOTAL SHEETS
F6	F47
STATE	YEAR
ALASKA	2009-2010

PROJECT DESIGNATION		
ADDENDUM NO.		
ATTACHMENT NO.		
REVISIONS		
NO.	DATE	DESCRIPTION



PRELIMINARY ENGINEERING
 NOT FOR CONSTRUCTION

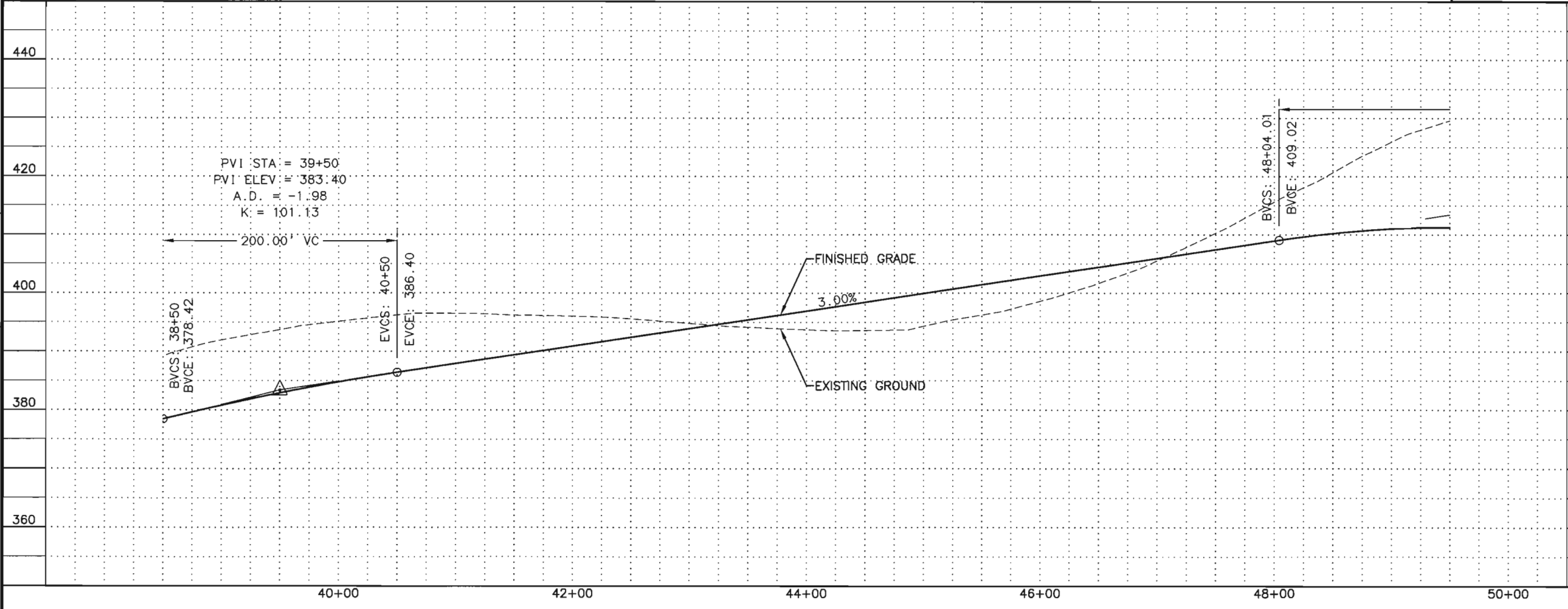
WORK IN PROGRESS
 This document represents
 current concepts as of _____
 (See date @ left border)

HATTENBURG DILLEY & LINNELL
 CITY OF WASILLA
 DEPARTMENT OF PUBLIC WORKS
 WASILLA, ALASKA

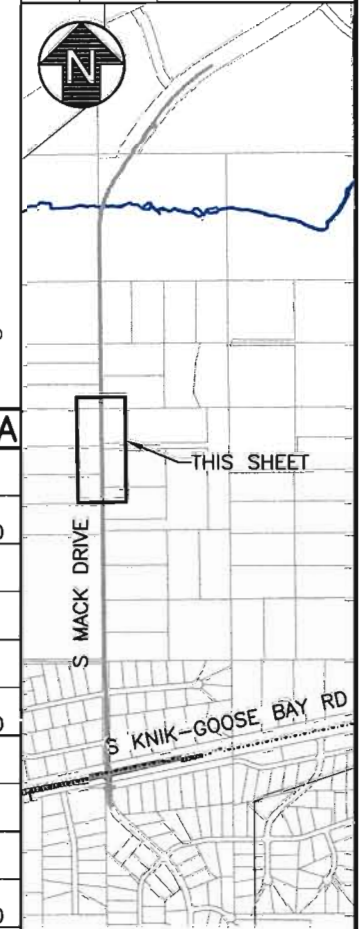
S. MACK DRIVE EXTENSION
 PRELIMINARY ENGINEERING
 REPORT

PLAN & PROFILE
 "A" 27+50 TO "A" 38+50

H:\p\08-006 Wasilla Mack Drive Extension (COW)\04-Preliminary Engineering Report\040006_04_Alt-A-F01-F08_1-90_12/22/08 at 11:00 by cob
 LAYOUT: F01-F08
 VREF: F01-F08
 XREF: 09006_00_B002, 09006_04_BASEMAP, 09006_04_IMAGE-1, 09006_04_COMPUTER DESIGNATION
 SCALE: 1"=40'
 XREFS:
 DESIGNED BY: CAB
 CHECKED BY: DML
 DRAWN BY: FLC



SHEET NO.	TOTAL SHEETS	
F7	F47	
STATE	YEAR	
ALASKA	2009-2010	
PROJECT DESIGNATION		
ADDENDUM NO.		
ATTACHMENT NO.		
REVISIONS		
NO.	DATE	DESCRIPTION



**PRELIMINARY ENGINEERING
NOT FOR CONSTRUCTION**

WORK IN PROGRESS
 This document represents
 current concepts as of _____
 (See date @ left border)

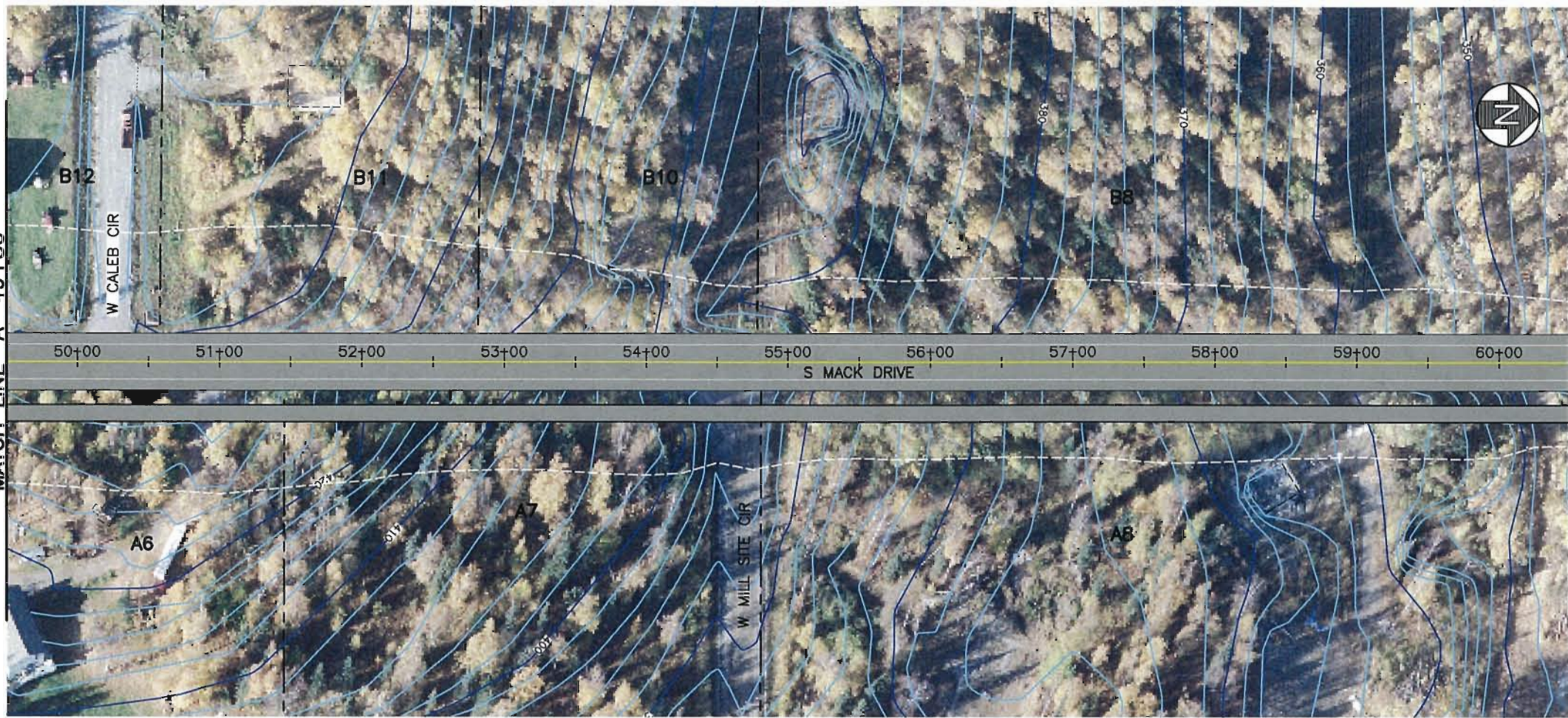
HATTENBURG DILLEY & LINNELL
 CITY OF WASILLA
 DEPARTMENT OF PUBLIC WORKS
 WASILLA, ALASKA

**S. MACK DRIVE EXTENSION
PRELIMINARY ENGINEERING
REPORT**

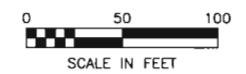
PLAN & PROFILE
 "A" 38+50 TO "A" 49+50

H:\jobs\09-006 Wasilla Mack Drive Extension (COW)\04-Preliminary Engineering Report\0400 drawings\09006_04_A1-A-F01-F06_1-50_12/22/09 at 11:00 by cob
 LAYOUT: F01-F08
 VIEW: F05, F07, F09
 XREF: 09006_04_BD02, 09006_04_BASEMAP, 09006_04_IMAGE-1, 09006_04_COMPUTER DESIGNATION
 SCALE: 1" = 40' (PLAN)
 XREF: 09006_04_BD02, 09006_04_BASEMAP, 09006_04_IMAGE-1, 09006_04_COMPUTER DESIGNATION
 SCALE: 1" = 40' (PLAN)
 XREF: 09006_04_BD02, 09006_04_BASEMAP, 09006_04_IMAGE-1, 09006_04_COMPUTER DESIGNATION
 SCALE: 1" = 40' (PLAN)

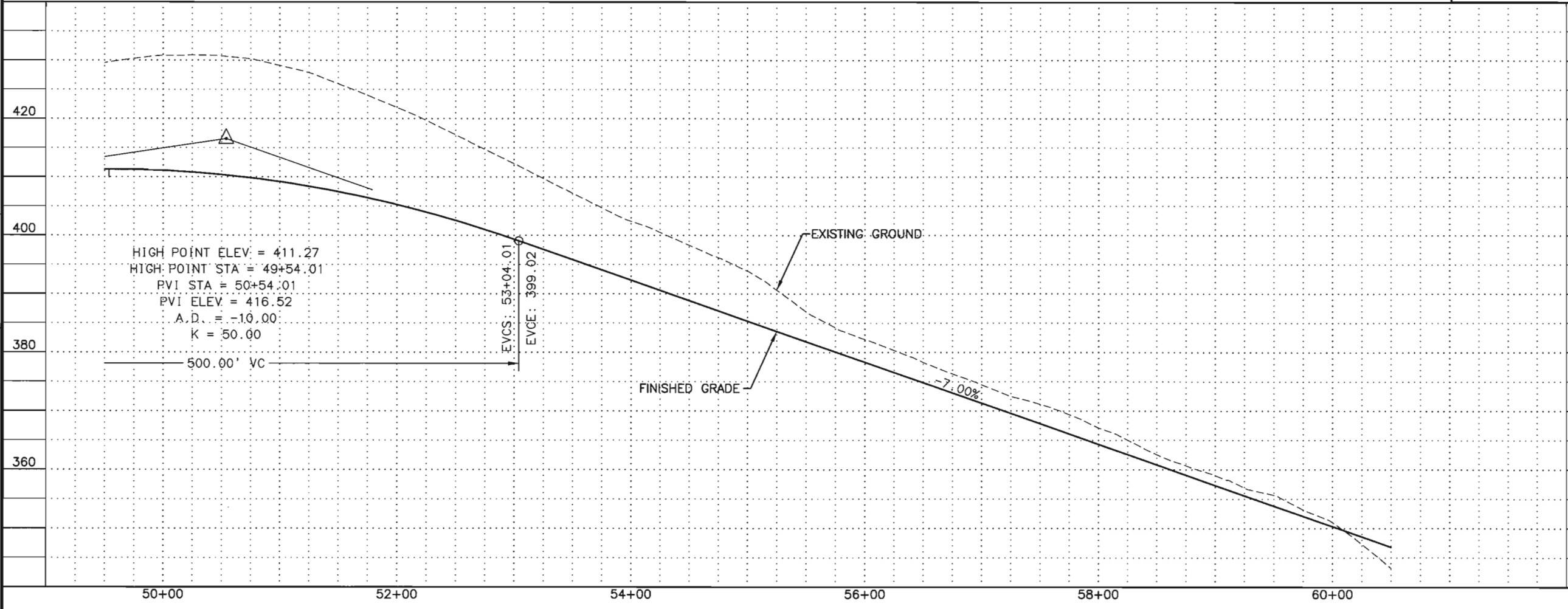
MATCH LINE "A" 49+50



MATCH LINE "A" 60+50



ALTERNATIVE A



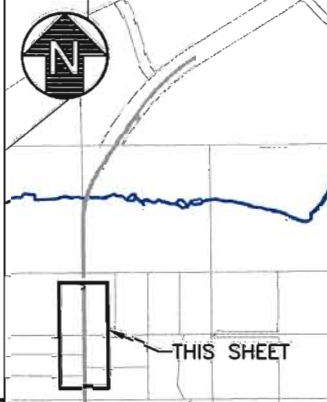
SHEET NO.	TOTAL SHEETS
F8	F47
STATE	YEAR
ALASKA	2009-2010
PROJECT DESIGNATION	

ADDENDUM NO.

ATTACHMENT NO.

REVISIONS

NO.	DATE	DESCRIPTION



PRELIMINARY ENGINEERING
NOT FOR CONSTRUCTION

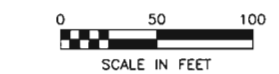
WORK IN PROGRESS
This document represents
current concepts as of
(See date @ left border)

HATTENBURG DILLEY & LINNELL
CITY OF WASILLA
DEPARTMENT OF PUBLIC WORKS
WASILLA, ALASKA

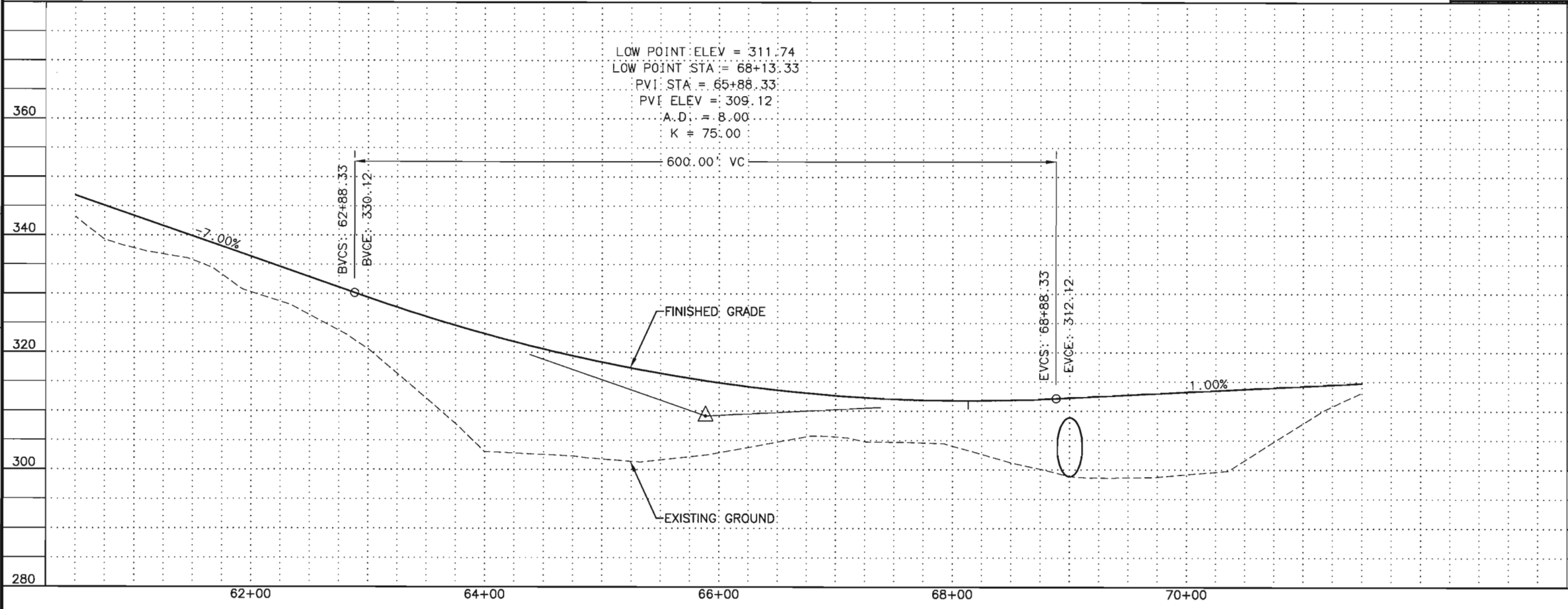
S. MACK DRIVE EXTENSION
PRELIMINARY ENGINEERING
REPORT

PLAN & PROFILE
"A" 49+50 TO "A" 60+50

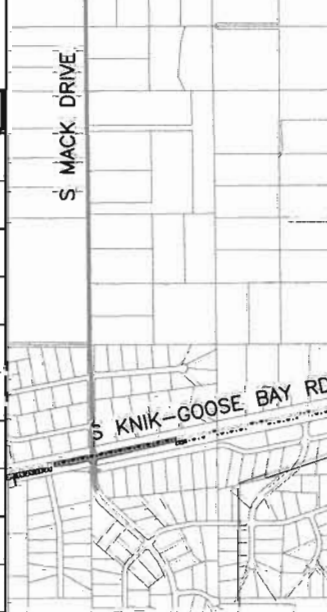
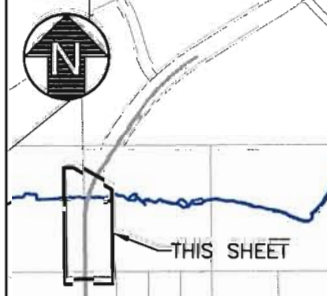
H:\pba\09-006 Wasilla Mack Drive Extension (COW)\04-Preliminary Engineering Report\CAD\Drawings\09006_04_Alt-A-F01-F06_1-50_12/22/09 at 11:00 by cob
 XREFS: PLOT CTB: ool_plt.ctb
 DESIGNED BY: DMB
 CHECKED BY: DMB
 DRAWN BY: TJC
 SCALE: 1" = 20' COMPUTER DESIGNATION
 LAYOUT: F01-F06
 VIEW: COW_XL_000
 XREF: 09006_04_BD02, 09006_04_BASEMAP, 09006_04_IMAGE-1, 09006_04_SUPERIMPOSE



ALTERNATIVE A



SHEET NO.	TOTAL SHEETS	
F9	F47	
STATE	YEAR	
ALASKA	2009-2010	
PROJECT DESIGNATION		
ADDENDUM NO.		
ATTACHMENT NO.		
REVISIONS		
NO.	DATE	DESCRIPTION



**PRELIMINARY ENGINEERING
 NOT FOR CONSTRUCTION**

WORK IN PROGRESS
 This document represents
 current concepts as of
 (See date @ left border)

HATTENBURG DILLEY & LINNELL
 CITY OF WASILLA
 DEPARTMENT OF PUBLIC WORKS
 WASILLA, ALASKA

**S. MACK DRIVE EXTENSION
 PRELIMINARY ENGINEERING
 REPORT**
 PLAN & PROFILE
 "A" 60+50 TO "A" 71+50