

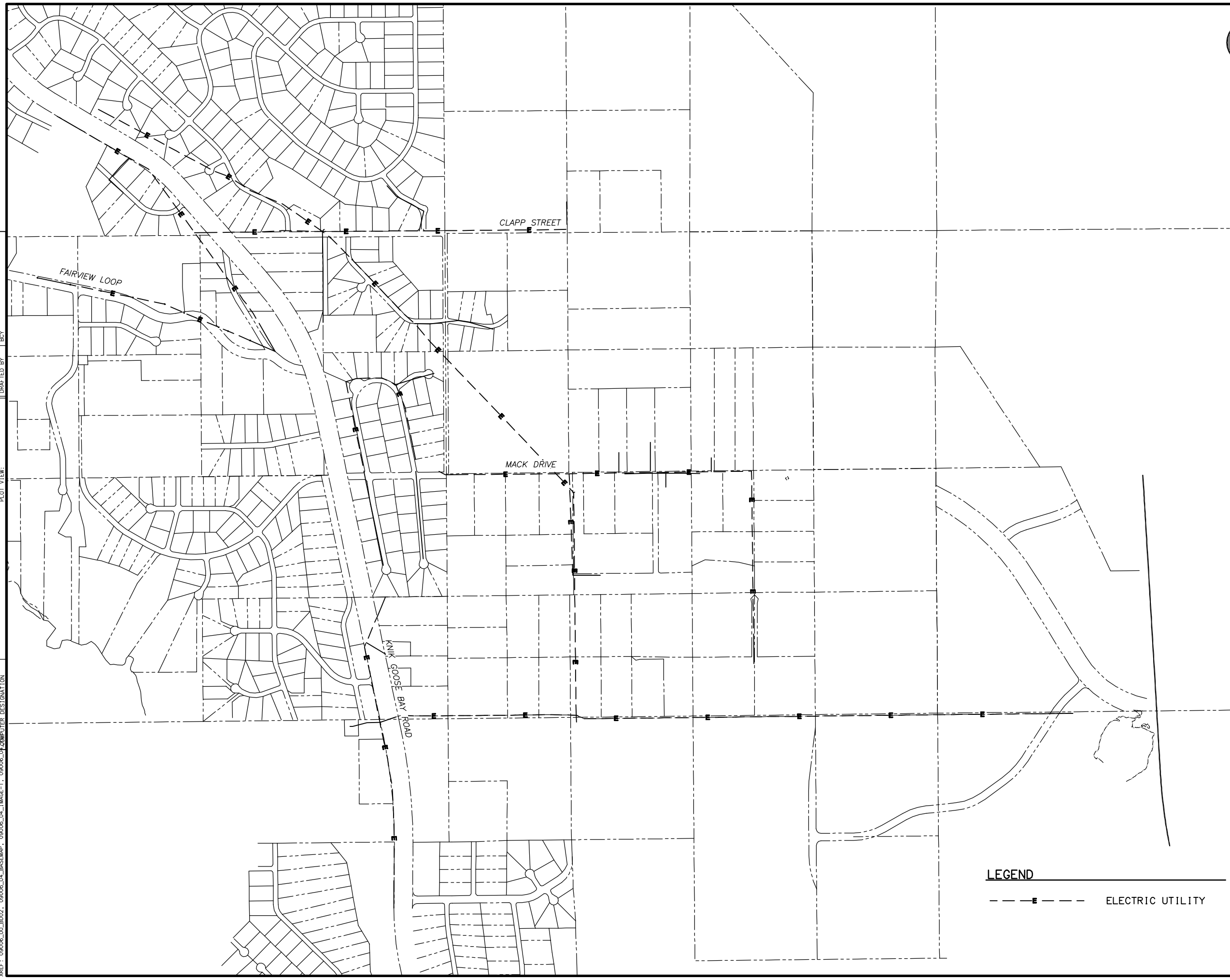
Appendix A

Utilities Schematics



| | | |
|---------------------|--------------|-------------|
| SHEET NO. | TOTAL SHEETS | |
| STATE | YEAR | |
| ALASKA | 2009-2010 | |
| PROJECT DESIGNATION | | |
| ADDENDUM NO. | | |
| ATTACHMENT NO. | | |
| REVISIONS | | |
| NO. | DATE | DESCRIPTION |
| | | |
| | | |
| | | |

H:\jobs\09-006 Wasilla Mack Drive Extension (CDM)\04-Preliminary Engineering Report\CAD\drawings\09006_04_utilities_1=50.12/28/09 at 16:10 by mehn
 XREFS: SCALE: 1"=50' PLOT SCALE: 1"=50' PLOT VIEW: DWG: 09006_04_utilities_1=50.12/28/09 at 16:10 by mehn
 DESIGNED BY: CAB CHECKED BY: DWL
 DRAFTED BY: BGY
 LAYOUT: F01-F06 VIEW: U02-PLX7700 XREF: 09006_00_B002, 09006_04_BASEMAP, 09006_04_IMAGE-1, 09006_04_IMAGE-1, 09006_04_COMPUTER DESIGNATION



LEGEND

---E--- ELECTRIC UTILITY

**PRELIMINARY ENGINEERING
NOT FOR CONSTRUCTION**

WORK IN PROGRESS
This document represents
current concepts as of _____
(See date @ left border)

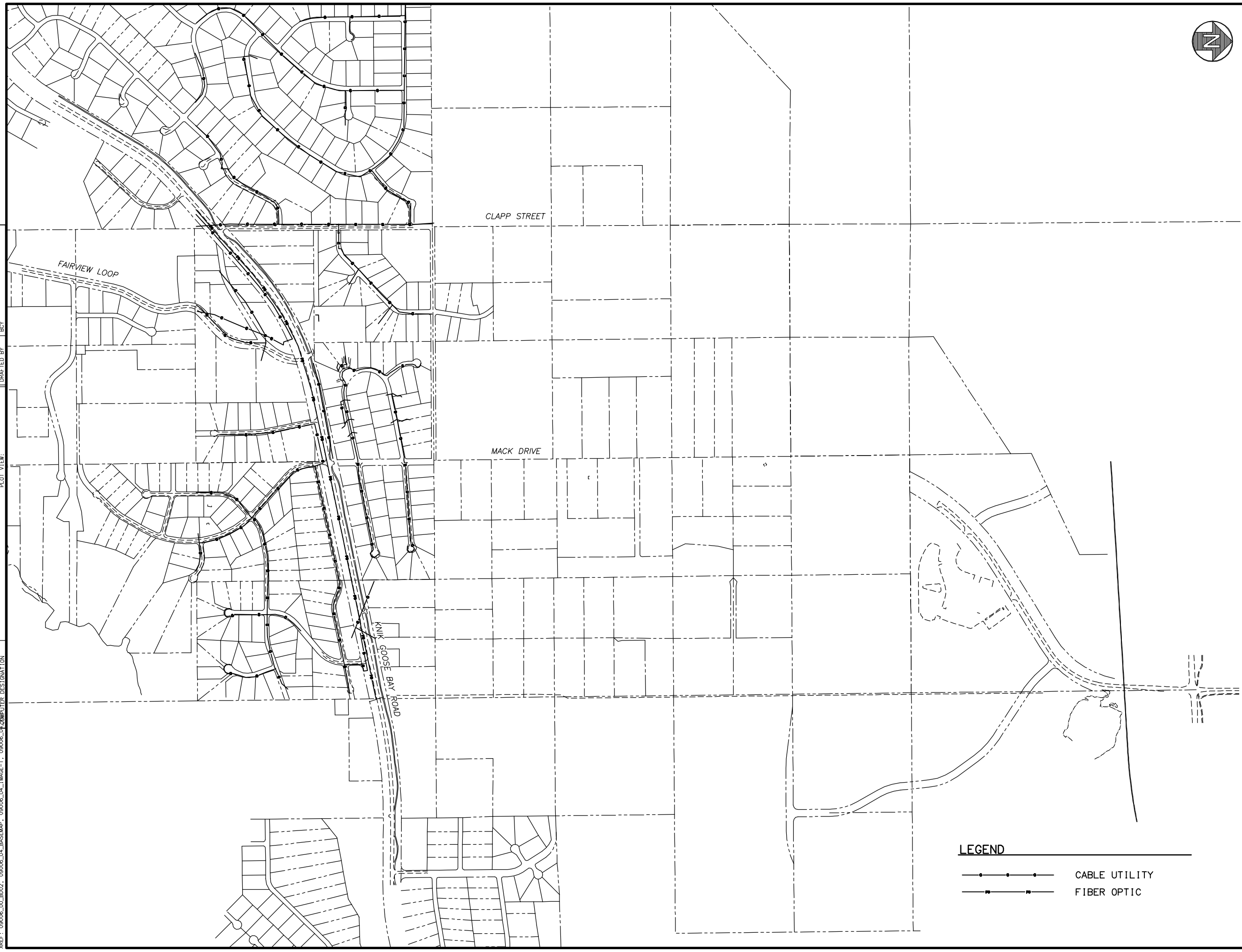
HATTENBURG DILLEY & LINNELL
CITY OF WASILLA
DEPARTMENT OF PUBLIC WORKS
WASILLA, ALASKA

**S. MACK DRIVE EXTENSION
PRELIMINARY ENGINEERING
REPORT**
APPENDIX A
EXISTING UTILITY SCHEMATIC



| | | |
|---------------------|--------------|-------------|
| SHEET NO. | TOTAL SHEETS | |
| STATE | YEAR | |
| ALASKA | 2009-2010 | |
| PROJECT DESIGNATION | | |
| ADDENDUM NO. | | |
| ATTACHMENT NO. | | |
| REVISIONS | | |
| NO. | DATE | DESCRIPTION |
| | | |
| | | |
| | | |

H:\jobs\09-006 Wasilla Mack Drive Extension (CDM)\04-Preliminary Engineering Report\CAD\drawings\09006_04_utilities_1=50.12/28/09 at 16:10 by mehn
 XREFS: PLOT CIB: add_ls.addt_ls DESIGNED BY: CAB CHECKED BY: DWL
 SCALE: 1"= 200' PLOT VIEW: PLOT SCALE: 1"= 200' DRAFTED BY: BGY
 LAYOUT: F01-F06 VIEW: U01_U_X7700 XREF: 09006_00_B002, 09006_04_BASEMAP, 09006_04_IMAGE-1, 09006_04_COMPUTER DESIGNATION



LEGEND

- CABLE UTILITY
- FIBER OPTIC

**PRELIMINARY ENGINEERING
 NOT FOR CONSTRUCTION**

WORK IN PROGRESS
 This document represents
 current concepts as of _____
 (See date @ left border)

HATTENBURG DILLEY & LINNELL

CITY OF WASILLA
 DEPARTMENT OF PUBLIC WORKS
 WASILLA, ALASKA

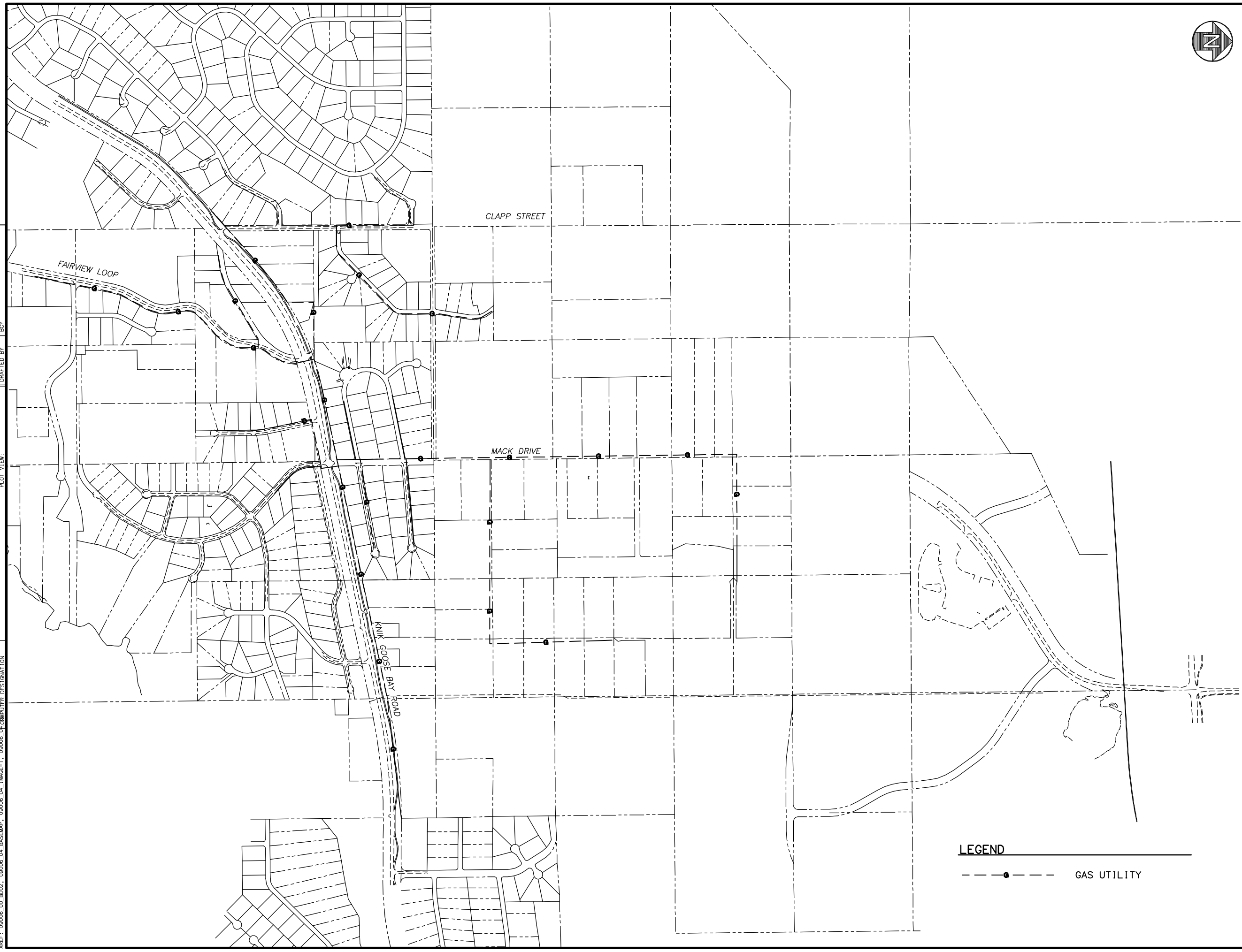
**S. MACK DRIVE EXTENSION
 PRELIMINARY ENGINEERING
 REPORT**

**APPENDIX A
 EXISTING UTILITY SCHEMATIC**



| | | |
|---------------------|--------------|-------------|
| SHEET NO. | TOTAL SHEETS | |
| STATE | YEAR | |
| ALASKA | 2009-2010 | |
| PROJECT DESIGNATION | | |
| ADDENDUM NO. | | |
| ATTACHMENT NO. | | |
| REVISIONS | | |
| NO. | DATE | DESCRIPTION |
| | | |
| | | |
| | | |

H:\jobs\09-006 Wasilla Mack Drive Extension (CDM)\04-Preliminary Engineering Report\CAD\drawings\09006_04_utilities_1.dwg, 12/28/09 at 16:10 by msh
 XREFS: SCALE: 1"=50' PLOT SCALE: 1"=50' PLOT VIEW: DWG
 DESIGNED BY: CAB CHECKED BY: DWL
 DRAFTED BY: BGY
 LAYOUT: F01-F06 VIEW: U01_U_X7700 XREF: 09006_00_BD02, 09006_04_BASEMAP, 09006_04_IMAGE-1, 09006_04_COMPUTER DESIGNATION



LEGEND
 - - - - - ● - - - - - GAS UTILITY

**PRELIMINARY ENGINEERING
 NOT FOR CONSTRUCTION**

WORK IN PROGRESS
 This document represents
 current concepts as of _____
 (See date @ left border)

HATTENBURG DILLEY & LINNELL
 CITY OF WASILLA
 DEPARTMENT OF PUBLIC WORKS
 WASILLA, ALASKA

**S. MACK DRIVE EXTENSION
 PRELIMINARY ENGINEERING
 REPORT**
 APPENDIX A
 EXISTING UTILITY SCHEMATIC